

Product datasheet for **TA388163**

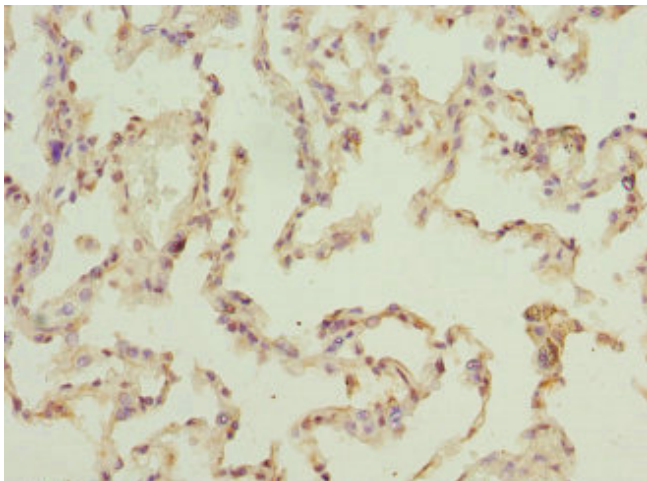
ELMOD1 Rabbit Polyclonal Antibody

Product data:

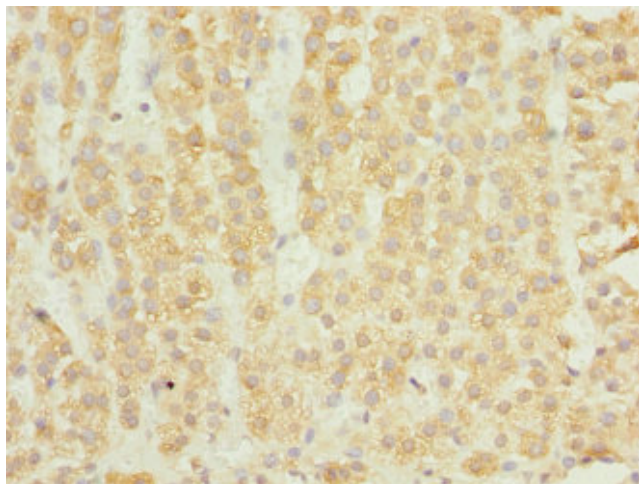
Product Type:	Primary Antibodies
Applications:	IHC, WB
Recommended Dilution:	Recommended dilution: WB:1:1000-1:5000, IHC:1:20-1:200
Reactivity:	Mouse, Human
Host:	Rabbit
Isotype:	IgG
Clonality:	Polyclonal
Immunogen:	Recombinant Human ELMO domain-containing protein 1 protein (185-334AA)
Formulation:	PBS with 0.02% sodium azide, 50% glycerol, pH7.3.
Concentration:	lot specific
Purification:	Antigen Affinity Purified
Conjugation:	Unconjugated
Storage:	Upon receipt, store at -20°C or -80°C. Avoid repeated freeze.
Stability:	1 year from dispatch.
Database Link:	Q8N336
Background:	Acts as a GTPase-activating protein (GAP) toward guanine nucleotide exchange factors like ARL2, ARL3, ARF1 and ARF6, but not for GTPases outside the Arf family.



[View online »](#)

Product images:

Immunohistochemistry of paraffin-embedded human lung tissue using TA388163 at dilution of 1:100



Immunohistochemistry of paraffin-embedded human adrenal gland tissue using TA388163 at dilution of 1:100



Western blot

All lanes: ELMOD1 antibody at 0.7 μ g/ml + Mouse kidney tissue

Secondary

Goat polyclonal to rabbit IgG at 1/10000 dilution

Predicted band size: 40, 23, 39 kDa

Observed band size: 40 kDa