

Product datasheet for **TA388162**

PLD6 Rabbit Polyclonal Antibody

Product data:

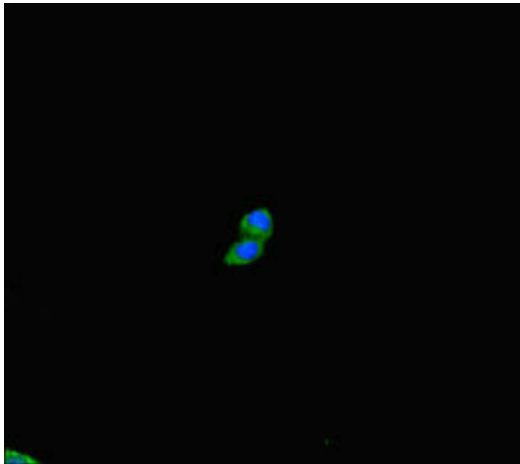
Product Type:	Primary Antibodies
Applications:	IF, IHC, WB
Recommended Dilution:	Recommended dilution: WB:1:2000-1:5000, IHC:1:20-1:200, IF:1:50-1:200
Reactivity:	Mouse, Human
Host:	Rabbit
Isotype:	IgG
Clonality:	Polyclonal
Immunogen:	Recombinant Human Mitochondrial cardiolipin hydrolase protein (1-252AA)
Formulation:	Preservative: 0.03% Proclin 300 Constituents: 50% Glycerol, 0.01M PBS, PH 7.4
Concentration:	lot specific
Purification:	>95%, Protein G purified
Conjugation:	Unconjugated
Storage:	Upon receipt, store at -20°C or -80°C. Avoid repeated freeze.
Stability:	1 year from dispatch.
Database Link:	Q8N2A8



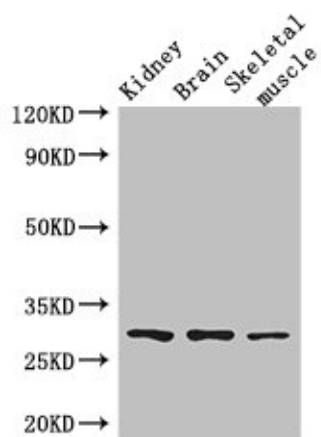
[View online »](#)

Background:

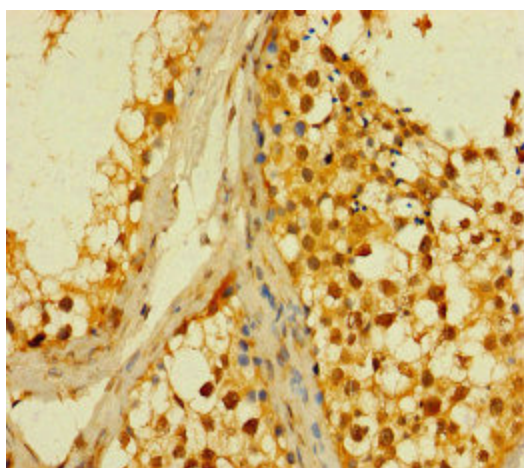
Endonuclease that plays a critical role in PIWI-interacting RNA (piRNA) biogenesis during spermatogenesis. piRNAs provide essential protection against the activity of mobile genetic elements (By similarity). piRNA-mediated transposon silencing is thus critical for maintaining genome stability, in particular in germline cells when transposons are mobilized as a consequence of wide-spread genomic demethylation (By similarity). Has been proposed to act as a cardiolipin hydrolase to generate phosphatidic acid at mitochondrial surface (By similarity). Although it cannot be excluded that it can act as a phospholipase in some circumstances, it should be noted that cardiolipin hydrolase activity is either undetectable in vitro, or very low (PubMed:21397848). In addition, cardiolipin is almost exclusively found on the inner mitochondrial membrane, while PLD6 localizes to the outer mitochondrial membrane, facing the cytosol (PubMed:21397848). Has been shown to be a backbone-non-specific, single strand-specific nuclease, cleaving either RNA or DNA substrates with similar affinity. Produces 5' phosphate and 3' hydroxyl termini, suggesting it could directly participate in the processing of primary piRNA transcripts (By similarity). Also acts as a regulator of mitochondrial shape through facilitating mitochondrial fusion (PubMed:17028579, PubMed:26711011).

Product images:

Immunofluorescent analysis of HepG2 cells using TA388162 at dilution of 1:100 and Alexa Fluor 488-conjugated AffiniPure Goat Anti-Rabbit IgG(H+L)



Western Blot
 Positive WB detected in: Mouse kidney tissue,
 Mouse brain tissue, Mouse skeletal muscle tissue
 All lanes: PLD6 antibody at 2.5µg/ml
 Secondary
 Goat polyclonal to rabbit IgG at 1/50000 dilution
 Predicted band size: 29 kDa
 Observed band size: 29 kDa



Immunohistochemistry of paraffin-embedded
 human testis tissue using TA388162 at dilution of
 1:100