

Product datasheet for **TA388156**

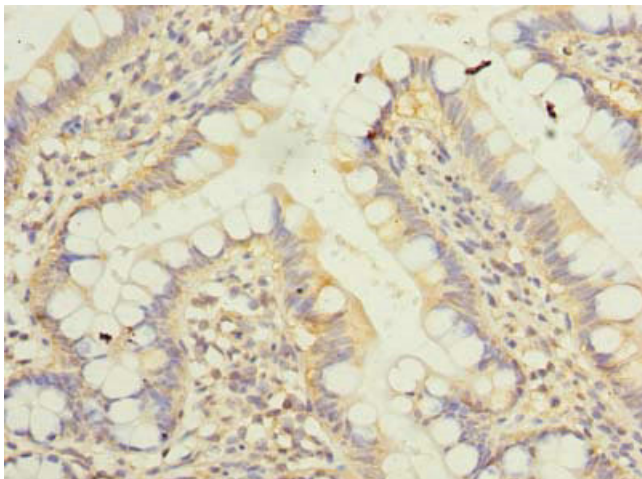
KLHDC8A Rabbit Polyclonal Antibody

Product data:

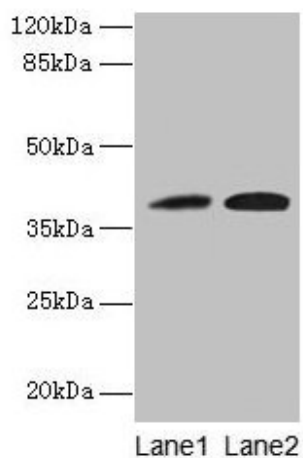
Product Type:	Primary Antibodies
Applications:	IHC, WB
Recommended Dilution:	Recommended dilution: WB:1:500-1:2000, IHC:1:20-1:200
Reactivity:	Mouse, Human
Host:	Rabbit
Isotype:	IgG
Clonality:	Polyclonal
Immunogen:	Recombinant Human Kelch domain-containing protein 8A protein (1-350AA)
Formulation:	Preservative: 0.03% Proclin 300 Constituents: 50% Glycerol, 0.01M PBS, PH 7.4
Concentration:	lot specific
Purification:	Antigen Affinity Purified
Conjugation:	Unconjugated
Storage:	Upon receipt, store at -20°C or -80°C. Avoid repeated freeze.
Stability:	1 year from dispatch.
Database Link:	Q8IYD2
Background:	Cul3-RING ubiquitin ligase complex, protein ubiquitination involved in ubiquitin-dependent protein catabolic process



[View online »](#)

Product images:

Immunohistochemistry of paraffin-embedded human small intestine tissue using TA388156 at dilution of 1:100



Western blot
All lanes: KLHDC8A antibody at 0.5 μ g/ml
Lane 1: Jurkat whole cell lysate
Lane 2: Mouse liver tissue
Secondary
Goat polyclonal to rabbit IgG at 1/10000 dilution
Predicted band size: 39 kDa
Observed band size: 39 kDa