

## Product datasheet for **TA388154M**

### MMD2 Rabbit Polyclonal Antibody

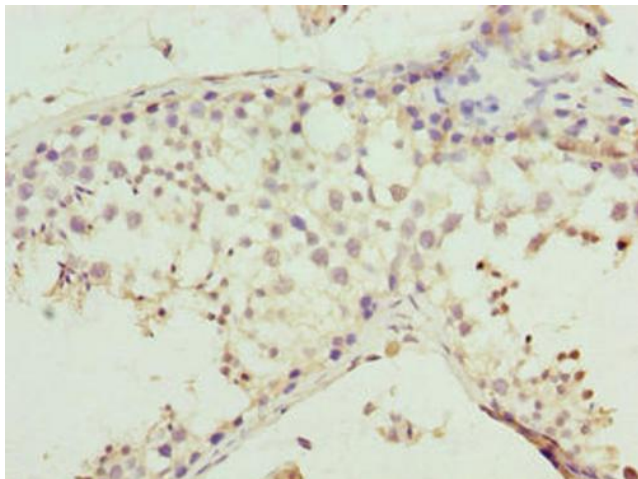
#### Product data:

Product Type:	Primary Antibodies
Applications:	IF, IHC, WB
Recommended Dilution:	Recommended dilution: WB:1:500-1:2000, IHC:1:20-1:200, IF:1:50-1:200
Reactivity:	Mouse, Human
Host:	Rabbit
Isotype:	IgG
Clonality:	Polyclonal
Immunogen:	Recombinant Human Monocyte to macrophage differentiation factor 2 protein (1-38AA)
Formulation:	Preservative: 0.03% Proclin 300 Constituents: 50% Glycerol, 0.01M PBS, PH 7.4
Concentration:	lot specific
Purification:	>95%, Protein G purified
Conjugation:	Unconjugated
Storage:	Upon receipt, store at -20°C or -80°C. Avoid repeated freeze.
Stability:	1 year from dispatch.
Database Link:	<a href="#">Q8IY49</a>
Background:	perinuclear region of cytoplasm, protein kinase activity, positive regulation of neuron differentiation, positive regulation of protein kinase activity, positive regulation of Ras protein signal transduction, protein phosphorylation, regulation of protein localization

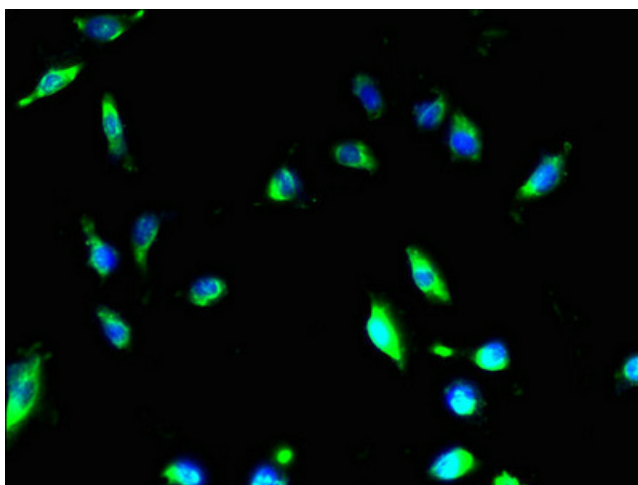


[View online »](#)

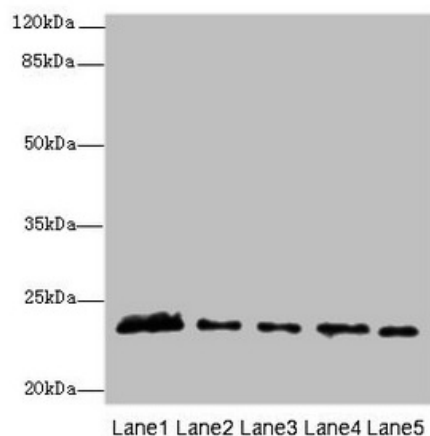
## Product images:



Immunohistochemistry of paraffin-embedded human testis tissue using [TA388154] at dilution of 1:100



Immunofluorescent analysis of U251 cells using [TA388154] at dilution of 1:100 and Alexa Fluor 488-conjugated AffiniPure Goat Anti-Rabbit IgG(H+L)



## Western blot

All lanes: MMD2 antibody at 3 $\mu$ g/ml

Lane 1: Mouse brain tissue

Lane 2: Mouse kidney tissue

Lane 3: U251 whole cell lysate

Lane 4: 293T whole cell lysate

Lane 5: Mouse liver tissue

## Secondary

Goat polyclonal to rabbit IgG at 1/10000 dilution

Predicted band size: 32, 29, 23 kDa

Observed band size: 23 kDa