

## Product datasheet for **TA388152M**

### **GPIHBP1 Rabbit Polyclonal Antibody**

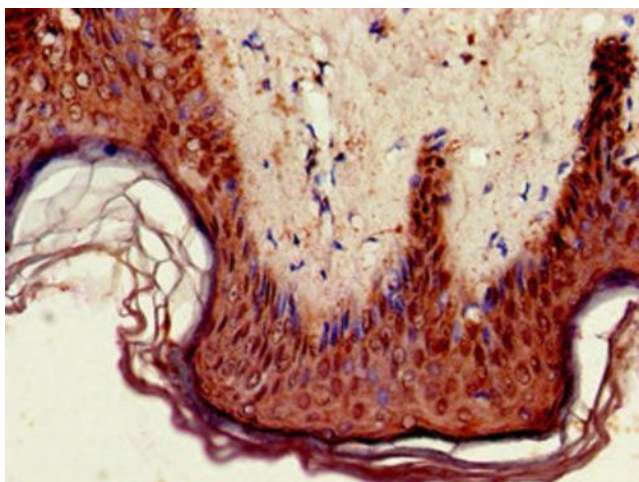
#### **Product data:**

<b>Product Type:</b>	Primary Antibodies
<b>Applications:</b>	IHC, WB
<b>Recommended Dilution:</b>	Recommended dilution: WB:1:500-1:5000, IHC:1:20-1:200
<b>Reactivity:</b>	Mouse, Rat, Human
<b>Host:</b>	Rabbit
<b>Isotype:</b>	IgG
<b>Clonality:</b>	Polyclonal
<b>Immunogen:</b>	Recombinant Human Glycosylphosphatidylinositol-anchored high density lipoprotein-binding protein 1 protein (21-151AA)
<b>Formulation:</b>	Preservative: 0.03% Proclin 300 Constituents: 50% Glycerol, 0.01M PBS, pH 7.4
<b>Concentration:</b>	lot specific
<b>Purification:</b>	>95%, Protein G purified
<b>Conjugation:</b>	Unconjugated
<b>Storage:</b>	Upon receipt, store at -20°C or -80°C. Avoid repeated freeze.
<b>Stability:</b>	1 year from dispatch.
<b>Database Link:</b>	<u><a href="#">Q8IV16</a></u>
<b>Background:</b>	Plays a key role in the lipolytic processing of chylomicrons. Required for the transport of lipoprotein lipase LPL into the capillary lumen (By similarity).

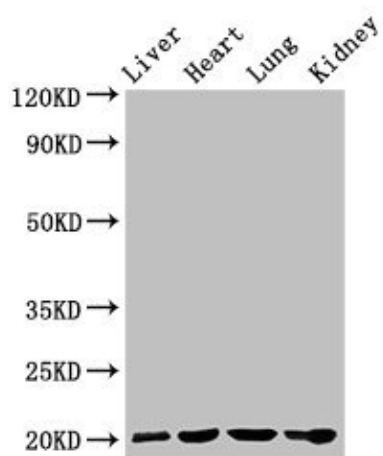


[View online »](#)

## Product images:



Immunohistochemistry of paraffin-embedded human skin tissue using [TA388152] at dilution of 1:100



### Western Blot

Positive WB detected in: Rat liver tissue, Mouse heart tissue, Mouse lung tissue, Mouse kidney tissue

All lanes: GPIHBP1 antibody at 4µg/ml

Secondary

Goat polyclonal to rabbit IgG at 1/50000 dilution

Predicted band size: 20 kDa

Observed band size: 20 kDa