

Product datasheet for **TA388152**

GPIHBP1 Rabbit Polyclonal Antibody

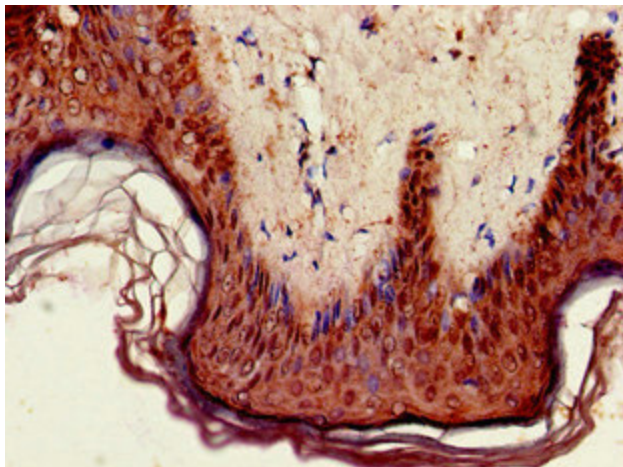
Product data:

Product Type:	Primary Antibodies
Applications:	IHC, WB
Recommended Dilution:	Recommended dilution: WB:1:500-1:5000, IHC:1:20-1:200
Reactivity:	Mouse, Rat, Human
Host:	Rabbit
Isotype:	IgG
Clonality:	Polyclonal
Immunogen:	Recombinant Human Glycosylphosphatidylinositol-anchored high density lipoprotein-binding protein 1 protein (21-151AA)
Formulation:	Preservative: 0.03% Proclin 300 Constituents: 50% Glycerol, 0.01M PBS, pH 7.4
Concentration:	lot specific
Purification:	>95%, Protein G purified
Conjugation:	Unconjugated
Storage:	Upon receipt, store at -20°C or -80°C. Avoid repeated freeze.
Stability:	1 year from dispatch.
Database Link:	Q8IV16
Background:	Plays a key role in the lipolytic processing of chylomicrons. Required for the transport of lipoprotein lipase LPL into the capillary lumen (By similarity).

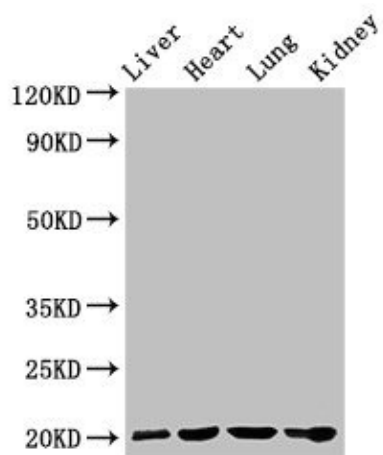


[View online »](#)

Product images:



Immunohistochemistry of paraffin-embedded human skin tissue using TA388152 at dilution of 1:100



Western Blot
Positive WB detected in: Rat liver tissue, Mouse heart tissue, Mouse lung tissue, Mouse kidney tissue
All lanes: GPIHBP1 antibody at 4 μ g/ml
Secondary
Goat polyclonal to rabbit IgG at 1/50000 dilution
Predicted band size: 20 kDa
Observed band size: 20 kDa