

Product datasheet for **TA388148**

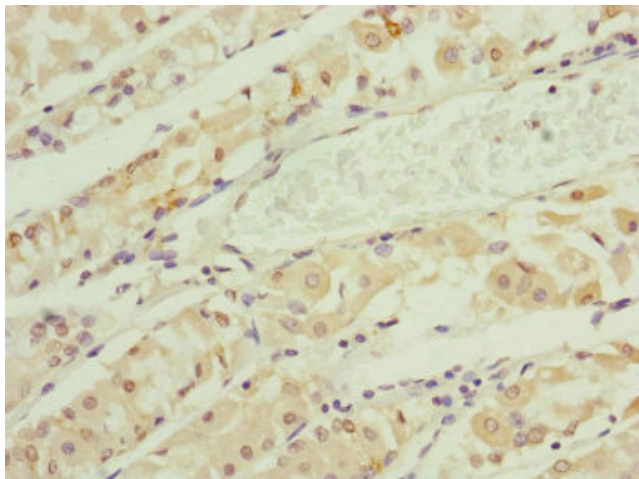
RNF135 Rabbit Polyclonal Antibody

Product data:

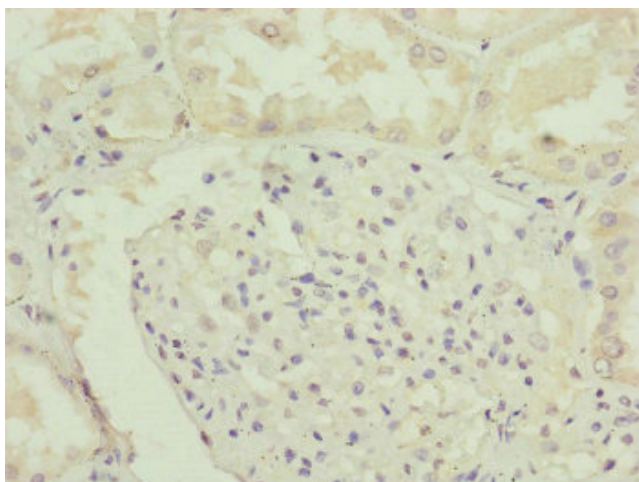
Product Type:	Primary Antibodies
Applications:	IHC, WB
Recommended Dilution:	Recommended dilution: WB:1:1000-1:5000, IHC:1:20-1:200
Reactivity:	Human
Host:	Rabbit
Isotype:	IgG
Clonality:	Polyclonal
Immunogen:	Recombinant Human E3 ubiquitin-protein ligase RNF135 protein (339-432AA)
Formulation:	PBS with 0.02% sodium azide, 50% glycerol, pH7.3.
Concentration:	lot specific
Purification:	Antigen Affinity Purified
Conjugation:	Unconjugated
Storage:	Upon receipt, store at -20°C or -80°C. Avoid repeated freeze.
Stability:	1 year from dispatch.
Database Link:	Q8IUD6
Background:	Acts as an E2-dependent E3 ubiquitin-protein ligase, involved in innate immune defense against viruses. Ubiquitinates DDX58 and is required for full activation of the DDX58 signaling resulting in interferon beta production.



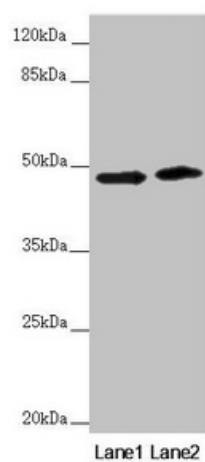
[View online »](#)

Product images:

Immunohistochemistry of paraffin-embedded human gastric cancer using TA388148 at dilution of 1:100



Immunohistochemistry of paraffin-embedded human kidney tissue using TA388148 at dilution of 1:100

**Western blot**

All lanes: RNF135 antibody at 3.51 µg/ml

Lane 1: 293T whole cell lysate

Lane 2: Jurkat whole cell lysate

Secondary

Goat polyclonal to rabbit IgG at 1/10000 dilution

Predicted band size: 48, 23, 31 kDa

Observed band size: 48 kDa