

## Product datasheet for **TA388147M**

### **GATAD2A Rabbit Polyclonal Antibody**

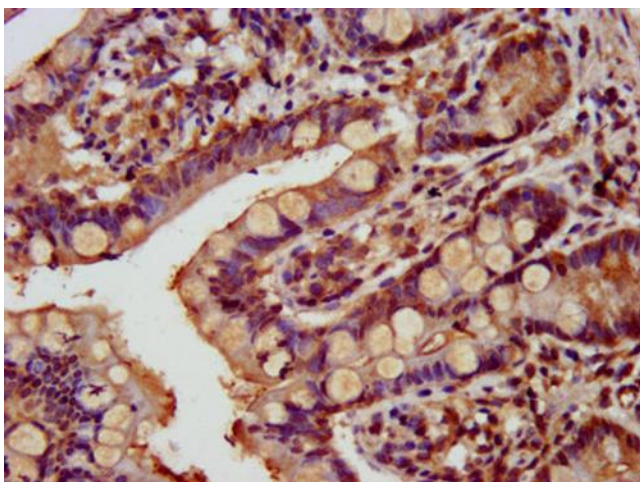
#### **Product data:**

Product Type:	Primary Antibodies
Applications:	IHC, WB
Recommended Dilution:	Recommended dilution: WB:1:500-1:5000, IHC:1:500-1:1000
Reactivity:	Rat, Human
Host:	Rabbit
Isotype:	IgG
Clonality:	Polyclonal
Immunogen:	Recombinant Human Transcriptional repressor p66-alpha protein (170-241AA)
Formulation:	Preservative: 0.03% Proclin 300 Constituents: 50% Glycerol, 0.01M PBS, pH 7.4
Concentration:	lot specific
Purification:	>95%, Protein G purified
Conjugation:	Unconjugated
Storage:	Upon receipt, store at -20°C or -80°C. Avoid repeated freeze.
Stability:	1 year from dispatch.
Database Link:	<a href="#">Q86YP4</a>
Background:	Transcriptional repressor. Enhances MBD2-mediated repression. Efficient repression requires the presence of GATAD2B.

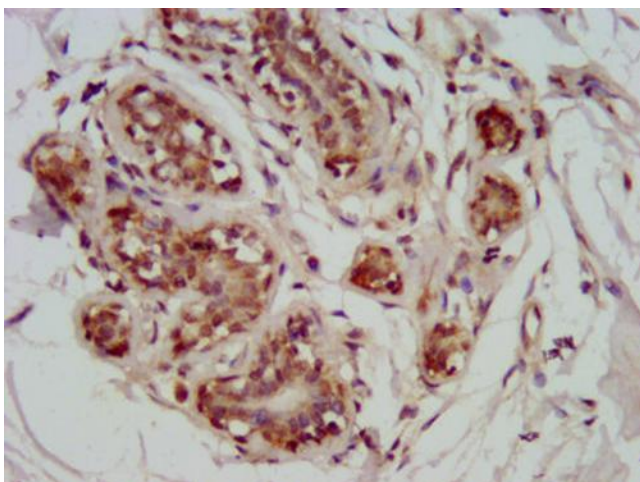


[View online »](#)

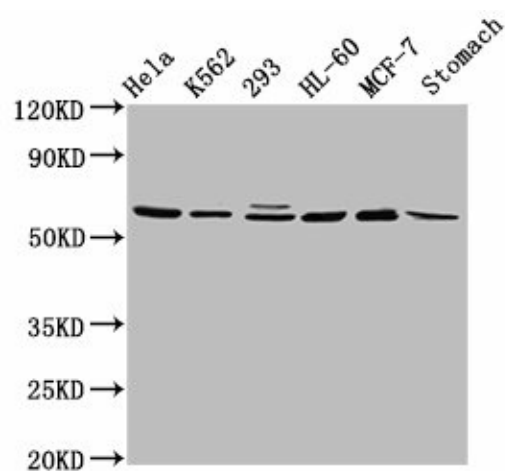
## Product images:



IHC image of [TA388147] diluted at 1:800 and staining in paraffin-embedded human small intestine tissue performed on a Leica Bond™ system. After dewaxing and hydration, antigen retrieval was mediated by high pressure in a citrate buffer (pH 6.0). Section was blocked with 10% normal goat serum 30min at RT. Then primary antibody (1% BSA) was incubated at 4°C overnight. The primary is detected by a biotinylated secondary antibody and visualized using an HRP conjugated SP system.



IHC image of [TA388147] diluted at 1:800 and staining in paraffin-embedded human breast cancer performed on a Leica Bond™ system. After dewaxing and hydration, antigen retrieval was mediated by high pressure in a citrate buffer (pH 6.0). Section was blocked with 10% normal goat serum 30min at RT. Then primary antibody (1% BSA) was incubated at 4°C overnight. The primary is detected by a biotinylated secondary antibody and visualized using an HRP conjugated SP system.



#### Western Blot

Positive WB detected in: HeLa whole cell lysate, K562 whole cell lysate, 293 whole cell lysate, HL60 whole cell lysate, MCF-7 whole cell lysate, Rat stomach tissue

All lanes: GATAD2A antibody at 2.9µg/ml

#### Secondary

Goat polyclonal to rabbit IgG at 1/50000 dilution

Predicted band size: 69, 66 kDa

Observed band size: 69 kDa