

## Product datasheet for **TA388140M**

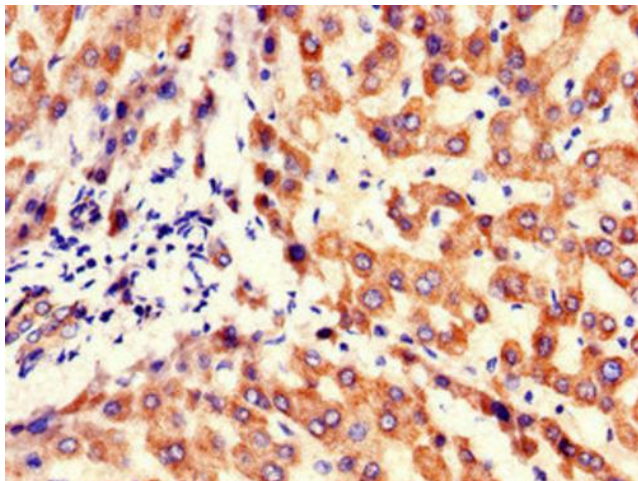
### **KBTBD6 Rabbit Polyclonal Antibody**

#### **Product data:**

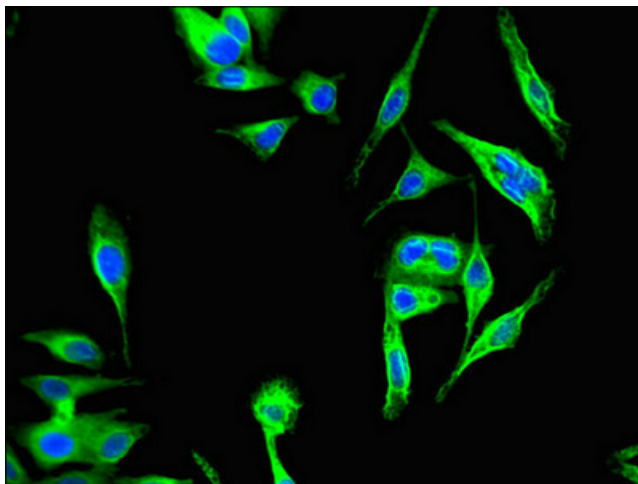
Product Type:	Primary Antibodies
Applications:	IF, IHC, WB
Recommended Dilution:	Recommended dilution: WB:1:500-1:5000, IHC:1:20-1:200, IF:1:50-1:200
Reactivity:	Human
Host:	Rabbit
Isotype:	IgG
Clonality:	Polyclonal
Immunogen:	Recombinant Human Kelch repeat and BTB domain-containing protein 6 protein (1-139AA)
Formulation:	Preservative: 0.03% Proclin 300 Constituents: 50% Glycerol, 0.01M PBS, PH 7.4
Concentration:	lot specific
Purification:	>95%, Protein G purified
Conjugation:	Unconjugated
Storage:	Upon receipt, store at -20°C or -80°C. Avoid repeated freeze.
Stability:	1 year from dispatch.
Database Link:	<a href="#">Q86V97</a>
Background:	Cul3-RING ubiquitin ligase complex



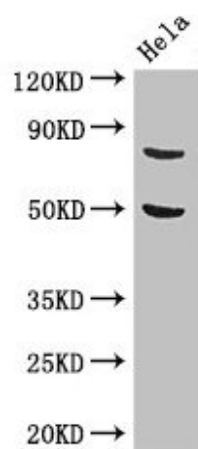
[View online »](#)

**Product images:**

Immunohistochemistry of paraffin-embedded human liver tissue using [TA388140] at dilution of 1:100



Immunofluorescent analysis of Hela cells using [TA388140] at dilution of 1:100 and Alexa Fluor 488-conjugated AffiniPure Goat Anti-Rabbit IgG(H+L)



Western Blot

Positive WB detected in: Hela whole cell lysate

All lanes: KBTD6 antibody at 3.4µg/ml

Secondary

Goat polyclonal to rabbit IgG at 1/50000 dilution

Predicted band size: 77 kDa

Observed band size: 77 kDa