

## Product datasheet for **TA388136**

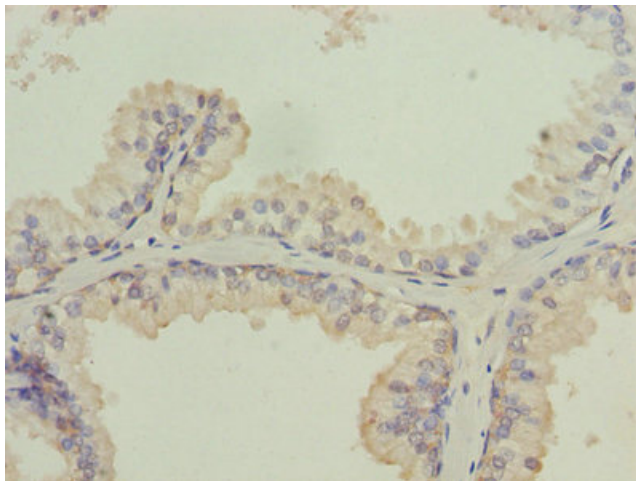
### ISCA2 Rabbit Polyclonal Antibody

#### Product data:

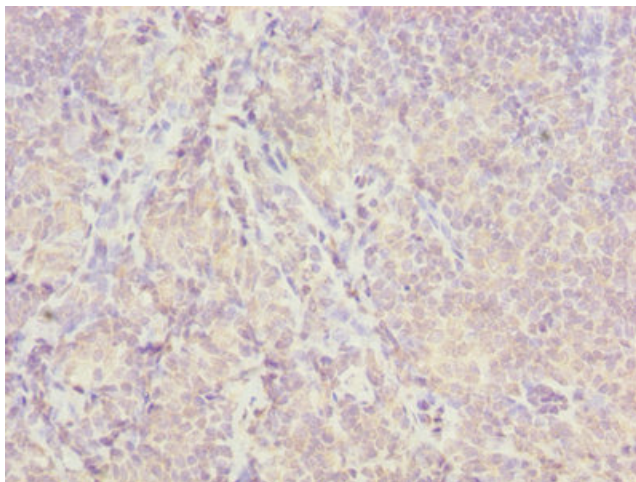
Product Type:	Primary Antibodies
Applications:	IHC, WB
Recommended Dilution:	Recommended dilution: WB:1:1000-1:5000, IHC:1:20-1:200
Reactivity:	Human
Host:	Rabbit
Isotype:	IgG
Clonality:	Polyclonal
Immunogen:	Recombinant Human Iron-sulfur cluster assembly 2 homolog, mitochondrial protein (9-154AA)
Formulation:	Preservative: 0.03% Proclin 300 Constituents: 50% Glycerol, 0.01M PBS, PH 7.4
Concentration:	lot specific
Purification:	Antigen Affinity Purified
Conjugation:	Unconjugated
Storage:	Upon receipt, store at -20°C or -80°C. Avoid repeated freeze.
Stability:	1 year from dispatch.
Database Link:	<a href="#">Q86U28</a>
Background:	Involved in the maturation of mitochondrial 4Fe-4S proteins functioning late in the iron-sulfur cluster assembly pathway. May be involved in the binding of an intermediate of Fe/S cluster assembly.



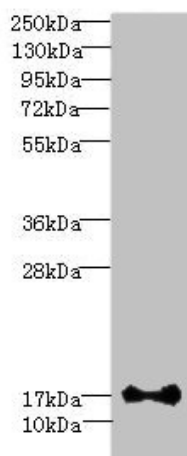
[View online »](#)

**Product images:**

Immunohistochemistry of paraffin-embedded human prostate cancer using TA388136 at dilution of 1:100



Immunohistochemistry of paraffin-embedded human tonsil tissue using TA388136 at dilution of 1:100



Western blot

All lanes: ISCA2 antibody at 0.4 $\mu$ g/ml + HL60 whole cell lysate

Secondary

Goat polyclonal to rabbit IgG at 1/10000 dilution

Predicted band size: 17, 7 kDa

Observed band size: 17 kDa