

## Product datasheet for **TA388135M**

### TRAPPC6B Rabbit Polyclonal Antibody

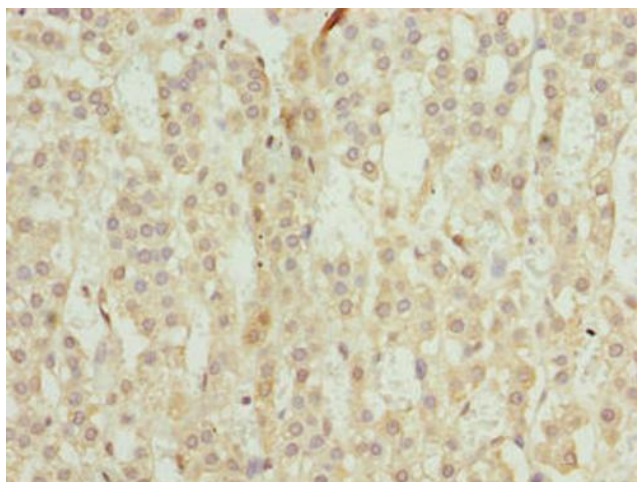
#### Product data:

Product Type:	Primary Antibodies
Applications:	IHC, WB
Recommended Dilution:	Recommended dilution: WB:1:1000-1:5000, IHC:1:20-1:200
Reactivity:	Mouse, Human
Host:	Rabbit
Isotype:	IgG
Clonality:	Polyclonal
Immunogen:	Recombinant Human Trafficking protein particle complex subunit 6B protein (1-130AA)
Formulation:	Preservative: 0.03% Proclin 300 Constituents: 50% Glycerol, 0.01M PBS, PH 7.4
Concentration:	lot specific
Purification:	>95%, Protein G purified
Conjugation:	Unconjugated
Storage:	Upon receipt, store at -20°C or -80°C. Avoid repeated freeze.
Stability:	1 year from dispatch.
Database Link:	<a href="#">Q86SZ2</a>
Background:	May play a role in vesicular transport from endoplasmic reticulum to Golgi.

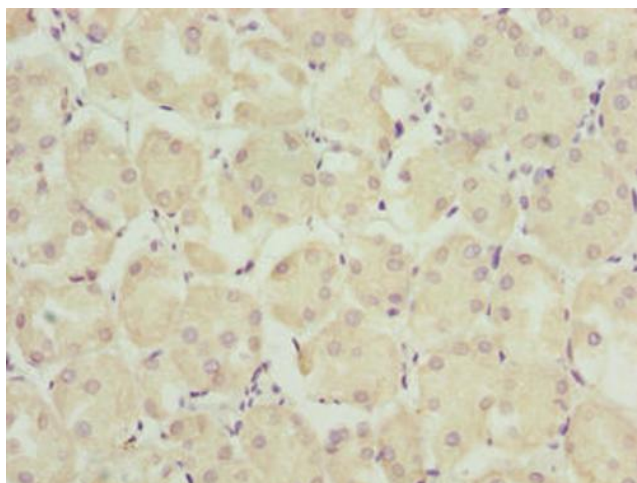


[View online »](#)

## Product images:



Immunohistochemistry of paraffin-embedded human adrenal gland tissue using [TA388135] at dilution of 1:100



Immunohistochemistry of paraffin-embedded human pancreatic tissue using [TA388135] at dilution of 1:100



Western blot  
 All lanes: TRAPPC6B antibody at 4 $\mu$ g/ml + Mouse kidney tissue  
 Secondary  
 Goat polyclonal to rabbit IgG at 1/10000 dilution  
 Predicted band size: 18, 15 kDa  
 Observed band size: 18 kDa