

## Product datasheet for **TA388134**

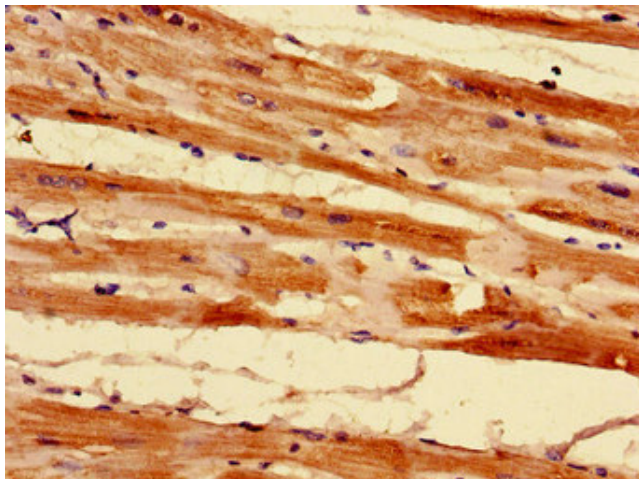
### MRPL55 Rabbit Polyclonal Antibody

#### Product data:

Product Type:	Primary Antibodies
Applications:	IHC, WB
Recommended Dilution:	Recommended dilution: WB:1:500-1:5000, IHC:1:20-1:200
Reactivity:	Human
Host:	Rabbit
Isotype:	IgG
Clonality:	Polyclonal
Immunogen:	Recombinant Human 39S ribosomal protein L55, mitochondrial protein (34-128AA)
Formulation:	Preservative: 0.03% Proclin 300 Constituents: 50% Glycerol, 0.01M PBS, PH 7.4
Concentration:	lot specific
Purification:	>95%, Protein G purified
Conjugation:	Unconjugated
Storage:	Upon receipt, store at -20°C or -80°C. Avoid repeated freeze.
Stability:	1 year from dispatch.
Database Link:	<a href="#">Q7Z7F7</a>
Background:	Component of the mitochondrial ribosome large subunit (39S) which comprises a 16S rRNA and about 50 distinct proteins



[View online »](#)

**Product images:**

Immunohistochemistry of paraffin-embedded human heart tissue using TA388134 at dilution of 1:100



Western blot  
All lanes: MRPL55 antibody at 2 $\mu$ g/ml  
Lane 1: K562 whole cell lysate  
Lane 2: PC-3 whole cell lysate  
Secondary  
Goat polyclonal to rabbit IgG at 1/10000 dilution  
Predicted band size: 16, 19 kDa  
Observed band size: 16 kDa