

Product datasheet for **TA388123**

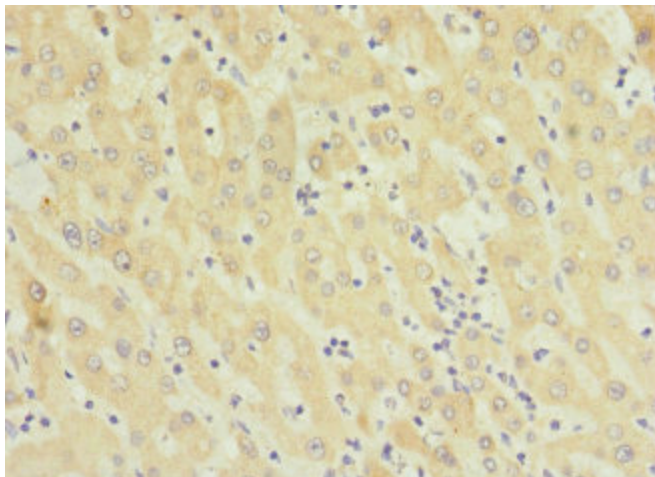
TMEM91 Rabbit Polyclonal Antibody

Product data:

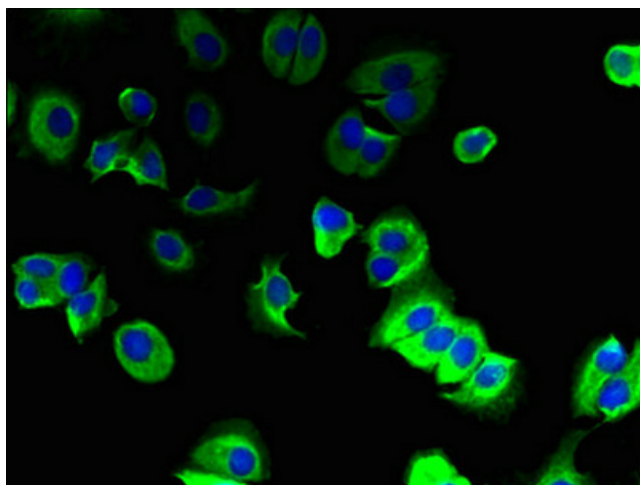
Product Type:	Primary Antibodies
Applications:	IF, IHC, WB
Recommended Dilution:	Recommended dilution: WB:1:1000-1:5000, IHC:1:20-1:200, IF:1:50-1:200
Reactivity:	Human
Host:	Rabbit
Isotype:	IgG
Clonality:	Polyclonal
Immunogen:	Recombinant Human Transmembrane protein 91 protein (1-97AA)
Formulation:	Preservative: 0.03% Proclin 300 Constituents: 50% Glycerol, 0.01M PBS, PH 7.4
Concentration:	lot specific
Purification:	>95%, Protein G purified
Conjugation:	Unconjugated
Storage:	Upon receipt, store at -20°C or -80°C. Avoid repeated freeze.
Stability:	1 year from dispatch.
Database Link:	Q6ZNR0



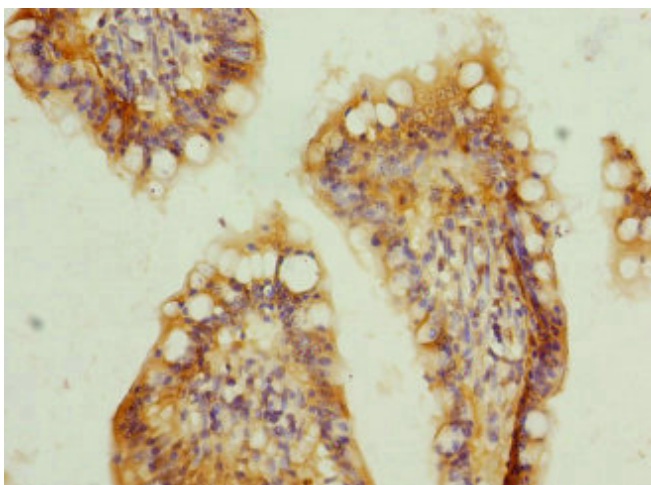
[View online »](#)

Product images:

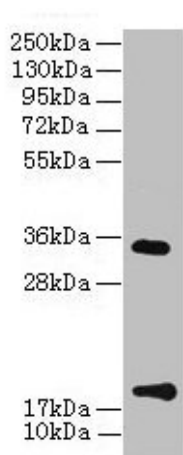
Immunohistochemistry of paraffin-embedded human liver cancer using TA388123 at dilution of 1:100



Immunofluorescent analysis of MCF-7 cells using TA388123 at dilution of 1:100 and Alexa Fluor 488-conjugated AffiniPure Goat Anti-Rabbit IgG(H+L)



Immunohistochemistry of paraffin-embedded human small intestine tissue using TA388123 at dilution of 1:100



Western Blot
 All lanes: TMEM91 antibody at 16µg/ml + A549 whole cell lysate
 Secondary
 Goat polyclonal to rabbit IgG at 1/10000 dilution
 Predicted band size: 19, 16, 14, 15 kDa
 Observed band size: 19, 34 kDa