

Product datasheet for **TA388118M**

MTHFD1L Rabbit Polyclonal Antibody

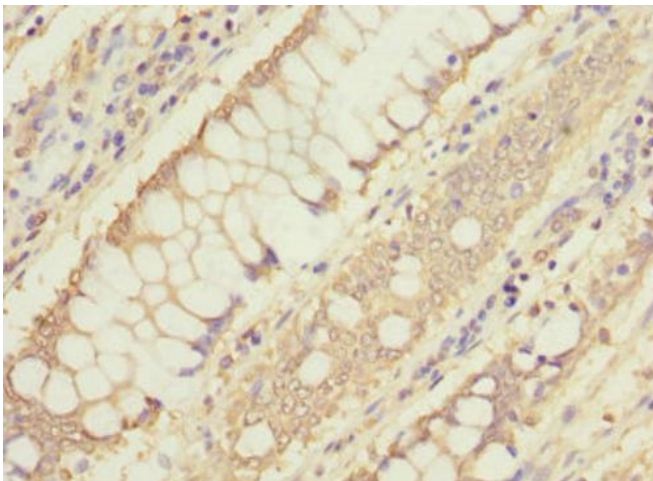
Product data:

Product Type:	Primary Antibodies
Applications:	IHC, WB
Recommended Dilution:	Recommended dilution: WB:1:1000-1:5000, IHC:1:20-1:200
Reactivity:	Human
Host:	Rabbit
Isotype:	IgG
Clonality:	Polyclonal
Immunogen:	Recombinant Human Monofunctional C1-tetrahydrofolate synthase, mitochondrial protein (759-978AA)
Formulation:	PBS with 0.02% sodium azide, 50% glycerol, pH7.3.
Concentration:	lot specific
Purification:	Antigen Affinity Purified
Conjugation:	Unconjugated
Storage:	Upon receipt, store at -20°C or -80°C. Avoid repeated freeze.
Stability:	1 year from dispatch.
Database Link:	Q6UB35
Background:	May provide the missing metabolic reaction required to link the mitochondria and the cytoplasm in the mammalian model of one-carbon folate metabolism in embryonic an transformed cells complementing thus the enzymatic activities of MTHFD2.

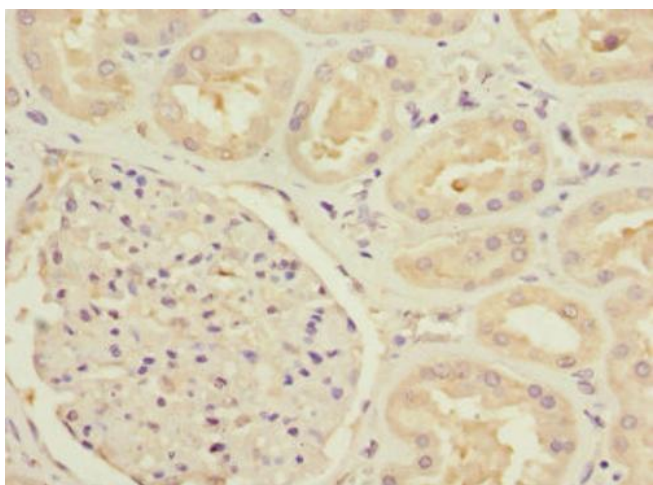


[View online »](#)

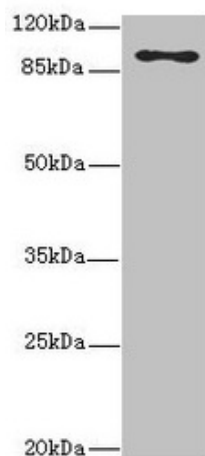
Product images:



Immunohistochemistry of paraffin-embedded human colon cancer using [TA388118] at dilution of 1:100



Immunohistochemistry of paraffin-embedded human kidney tissue using [TA388118] at dilution of 1:100



Western blot

All lanes: MTHFD1L antibody at 3.68µg/ml + HeLa whole cell lysate

Secondary

Goat polyclonal to rabbit IgG at 1/10000 dilution

Predicted band size: 106, 30 kDa

Observed band size: 106 kDa