

Product datasheet for **TA388113**

NOTUM Rabbit Polyclonal Antibody

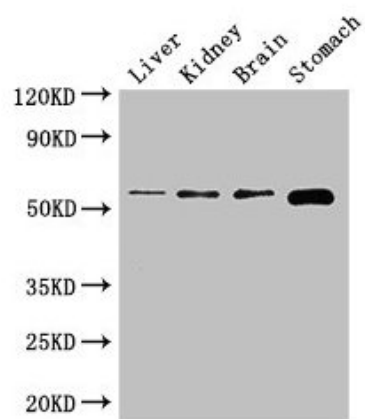
Product data:

Product Type:	Primary Antibodies
Applications:	WB
Recommended Dilution:	Recommended dilution: WB:1:500-1:5000
Reactivity:	Mouse, Human
Host:	Rabbit
Isotype:	IgG
Clonality:	Polyclonal
Immunogen:	Recombinant Human Palmitoleoyl-protein carboxylesterase NOTUM protein (100-235AA)
Formulation:	Preservative: 0.03% Proclin 300 Constituents: 50% Glycerol, 0.01M PBS, PH 7.4
Concentration:	lot specific
Purification:	>95%, Protein G purified
Conjugation:	Unconjugated
Storage:	Upon receipt, store at -20°C or -80°C. Avoid repeated freeze.
Stability:	1 year from dispatch.
Database Link:	Q6P988
Background:	Carboxylesterase that acts as a key negative regulator of the Wnt signaling pathway by specifically mediating depalmitoylation of WNT proteins. Serine palmitoylation of WNT proteins is required for efficient binding to frizzled receptors (PubMed:25731175).



[View online »](#)

Product images:



Western Blot

Positive WB detected in: Mouse liver tissue,
Mouse kidney tissue, Mouse brain tissue, Mouse
stomach tissue

All lanes: NOTUM antibody at 2.7 μ g/ml

Secondary

Goat polyclonal to rabbit IgG at 1/50000 dilution

Predicted band size: 56 kDa

Observed band size: 56 kDa