

Product datasheet for **TA388112M**

MRPL14 Rabbit Polyclonal Antibody

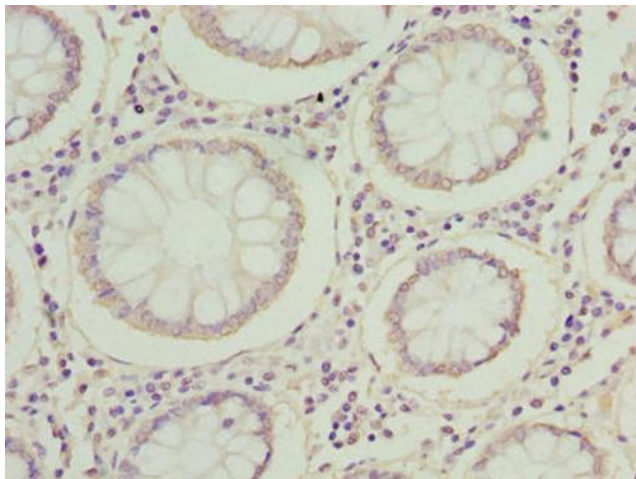
Product data:

Product Type:	Primary Antibodies
Applications:	IHC, WB
Recommended Dilution:	Recommended dilution: WB:1:1000-1:5000, IHC:1:20-1:200
Reactivity:	Mouse, Human
Host:	Rabbit
Isotype:	IgG
Clonality:	Polyclonal
Immunogen:	Recombinant Human 39S ribosomal protein L14, mitochondrial protein (1-145AA)
Formulation:	Preservative: 0.03% Proclin 300 Constituents: 50% Glycerol, 0.01M PBS, PH 7.4
Concentration:	lot specific
Purification:	>95%, Protein G purified
Conjugation:	Unconjugated
Storage:	Upon receipt, store at -20°C or -80°C. Avoid repeated freeze.
Stability:	1 year from dispatch.
Database Link:	Q6P1L8
Background:	Forms part of 2 intersubunit bridges in the assembled ribosome. Upon binding to MALSU1 intersubunit bridge formation is blocked, preventing ribosome formation and repressing translation (Probable).

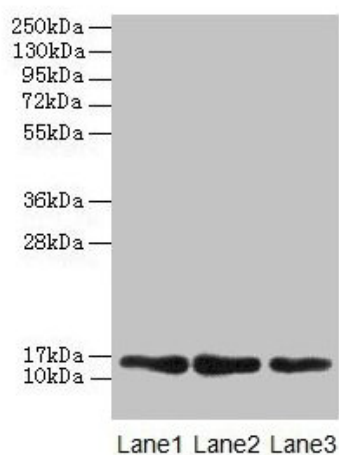


[View online »](#)

Product images:



Immunohistochemistry of paraffin-embedded human colon cancer using [TA388112] at dilution of 1:100



Western blot
All lanes: MRPL14 antibody at 2 μ g/ml
Lane 1: Hela whole cell lysate
Lane 2: HepG2 whole cell lysate
Lane 3: Mouse liver tissue
Secondary
Goat polyclonal to rabbit IgG at 1/10000 dilution
Predicted band size: 16 kDa
Observed band size: 16 kDa