

## Product datasheet for **TA388109M**

### **PYHIN1 Rabbit Polyclonal Antibody**

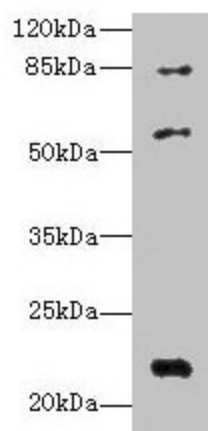
#### **Product data:**

Product Type:	Primary Antibodies
Applications:	WB
Recommended Dilution:	Recommended dilution: WB:1:1000-1:5000
Reactivity:	Mouse, Human
Host:	Rabbit
Isotype:	IgG
Clonality:	Polyclonal
Immunogen:	Recombinant Human Pyrin and HIN domain-containing protein 1 protein (1-245AA)
Formulation:	Preservative: 0.03% Proclin 300 Constituents: 50% Glycerol, 0.01M PBS, PH 7.4
Concentration:	lot specific
Purification:	>95%, Protein G purified
Conjugation:	Unconjugated
Storage:	Upon receipt, store at -20°C or -80°C. Avoid repeated freeze.
Stability:	1 year from dispatch.
Database Link:	<a href="#">Q6K0P9</a>
Background:	Major mediator of the tumor suppressor activity of IFN in breast cancer cells. Promotes ubiquitination and subsequent degradation of MDM2, which leads to p53/TP53 stabilization. Promotes ubiquitination and subsequent degradation of HDAC1, which in turn enhances maspin expression, and impairs invasive activity of cancer cells.



[View online »](#)

## Product images:



Western blot

All lanes: PYHIN1 antibody at 6 $\mu$ g/ml + Mouse small intestine tissue

Secondary

Goat polyclonal to rabbit IgG at 1/10000 dilution

Predicted band size: 56, 55, 52, 51, 27, 26 kDa

Observed band size: 56, 22, 84 kDa