

Product datasheet for **TA388107M**

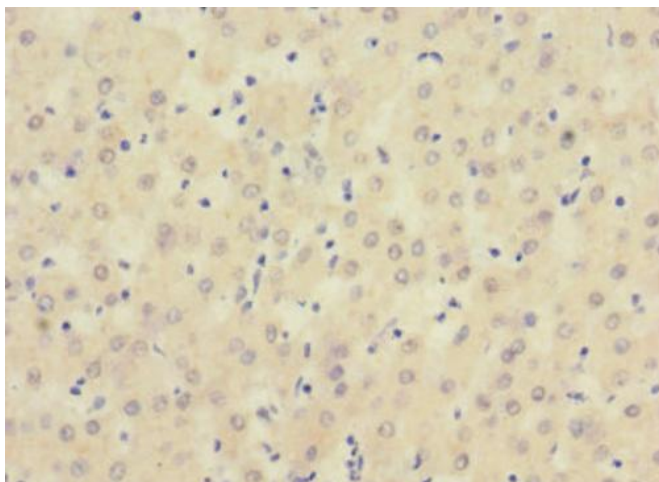
SIGIRR Rabbit Polyclonal Antibody

Product data:

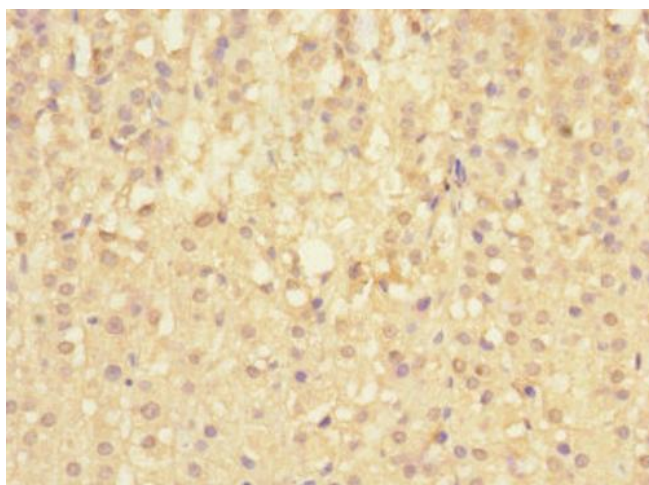
Product Type:	Primary Antibodies
Applications:	IHC, WB
Recommended Dilution:	Recommended dilution: WB:1:1000-1:5000, IHC:1:20-1:200
Reactivity:	Mouse, Human
Host:	Rabbit
Isotype:	IgG
Clonality:	Polyclonal
Immunogen:	Recombinant Human Single Ig IL-1-related receptor protein (1-120AA)
Formulation:	PBS with 0.02% sodium azide, 50% glycerol, pH7.3.
Concentration:	lot specific
Purification:	Antigen Affinity Purified
Conjugation:	Unconjugated
Storage:	Upon receipt, store at -20°C or -80°C. Avoid repeated freeze.
Stability:	1 year from dispatch.
Database Link:	Q6IA17
Background:	Acts as a negative regulator of the Toll-like and IL-1R receptor signaling pathways. Attenuates the recruitment of receptor-proximal signaling components to the TLR4 receptor, probably through an TIR-TIR domain interaction with TLR4. Through its extracellular domain interferes with the heterodimerization of IL1R1 and IL1RAP.

[View online »](#)

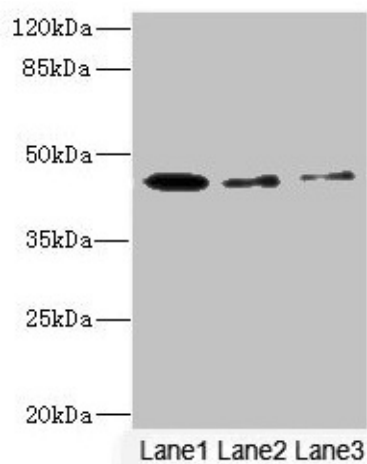
Product images:



Immunohistochemistry of paraffin-embedded human liver cancer using [TA388107] at dilution of 1:100



Immunohistochemistry of paraffin-embedded human adrenal gland tissue using [TA388107] at dilution of 1:100



Western blot

All lanes: SIGIRR antibody at 1.77µg/ml

Lane 1: Mouse liver tissue

Lane 2: Mouse kidney tissue

Lane 3: MCF-7 whole cell lysate

Secondary

Goat polyclonal to rabbit IgG at 1/10000 dilution

Predicted band size: 46, 56 kDa

Observed band size: 46 kDa