

Product datasheet for **TA388104**

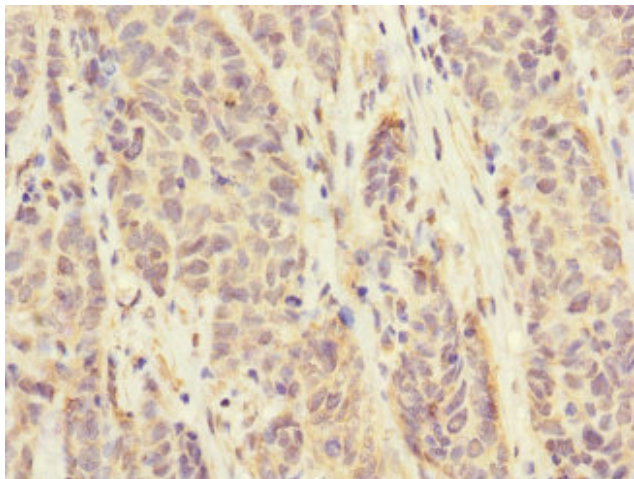
FCRL6 Rabbit Polyclonal Antibody

Product data:

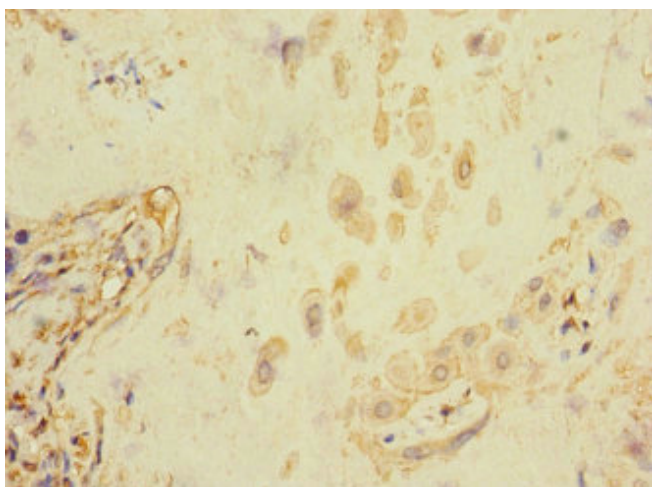
Product Type:	Primary Antibodies
Applications:	IHC, WB
Recommended Dilution:	Recommended dilution: WB:1:1000-1:5000, IHC:1:20-1:200
Reactivity:	Human
Host:	Rabbit
Isotype:	IgG
Clonality:	Polyclonal
Immunogen:	Recombinant Human Fc receptor-like protein 6 protein (20-307AA)
Formulation:	PBS with 0.02% sodium azide, 50% glycerol, pH7.3.
Concentration:	lot specific
Purification:	Antigen Affinity Purified
Conjugation:	Unconjugated
Storage:	Upon receipt, store at -20°C or -80°C. Avoid repeated freeze.
Stability:	1 year from dispatch.
Database Link:	Q6DN72
Background:	external side of plasma membrane



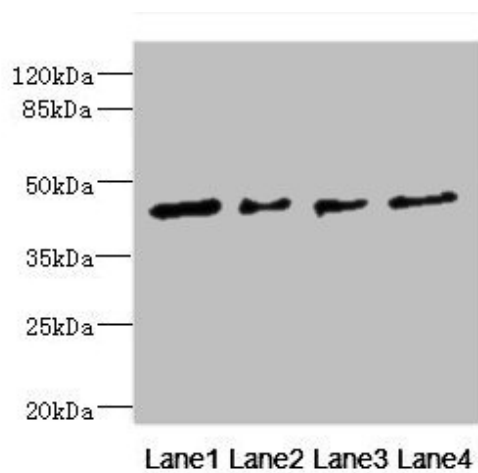
[View online »](#)

Product images:

Immunohistochemistry of paraffin-embedded human ovarian cancer using TA388104 at dilution of 1:100



Immunohistochemistry of paraffin-embedded human placenta tissue using TA388104 at dilution of 1:100



Western blot

All lanes: FCRL6 antibody at 1.29 μ g/ml

Lane 1: HeLa whole cell lysate

Lane 2: A549 whole cell lysate

Lane 3: Jurkat whole cell lysate

Lane 4: HepG2 whole cell lysate

Secondary

Goat polyclonal to rabbit IgG at 1/10000 dilution

Predicted band size: 48, 46, 44, 35 kDa

Observed band size: 48 kDa