

## Product datasheet for **TA388100M**

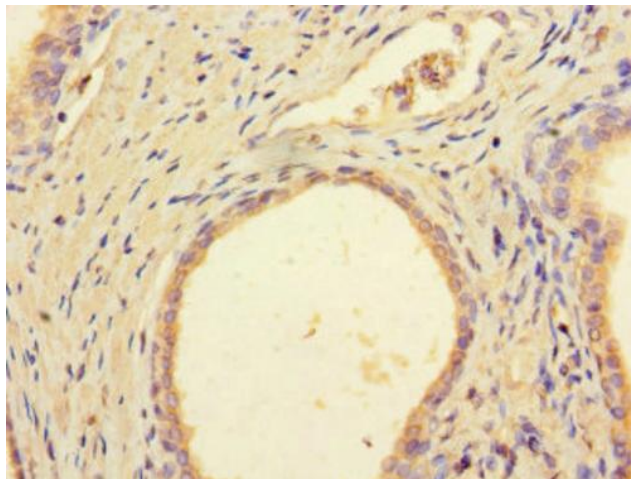
### DCAF8 Rabbit Polyclonal Antibody

#### Product data:

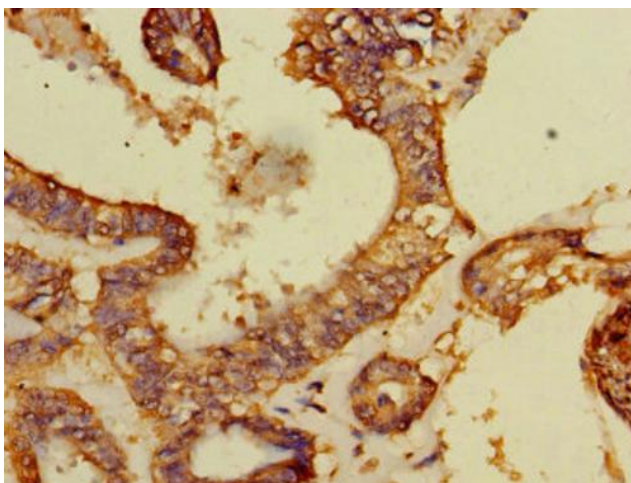
Product Type:	Primary Antibodies
Applications:	IHC, WB
Recommended Dilution:	Recommended dilution: WB:1:2000-1:5000, IHC:1:20-1:200
Reactivity:	Mouse, Human
Host:	Rabbit
Isotype:	IgG
Clonality:	Polyclonal
Immunogen:	Recombinant Human DDB1- and CUL4-associated factor 8 protein (1-135AA)
Formulation:	Preservative: 0.03% Proclin 300 Constituents: 50% Glycerol, 0.01M PBS, PH 7.4
Concentration:	lot specific
Purification:	>95%, Protein G purified
Conjugation:	Unconjugated
Storage:	Upon receipt, store at -20°C or -80°C. Avoid repeated freeze.
Stability:	1 year from dispatch.
Database Link:	<a href="#">Q5TAQ9</a>
Background:	May function as a substrate receptor for CUL4-DDB1 E3 ubiquitin-protein ligase complex.

[View online »](#)

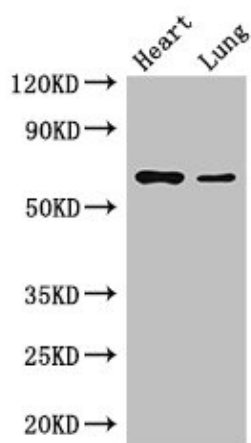
**Product images:**



Immunohistochemistry of paraffin-embedded human prostate cancer using [TA388100] at dilution of 1:100



Immunohistochemistry of paraffin-embedded human endometrial cancer using [TA388100] at dilution of 1:100



Western Blot

Positive WB detected in: Mouse heart tissue,  
Mouse lung tissue

All lanes: DCAF8 antibody at 3.5µg/ml

Secondary

Goat polyclonal to rabbit IgG at 1/50000 dilution

Predicted band size: 67, 31 kDa

Observed band size: 67 kDa