

Product datasheet for **TA388097M**

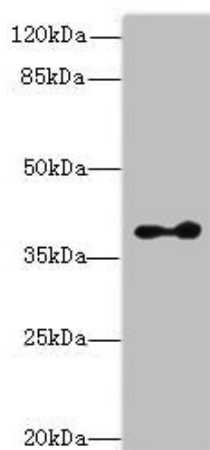
CLVS2 Rabbit Polyclonal Antibody

Product data:

Product Type:	Primary Antibodies
Applications:	WB
Recommended Dilution:	Recommended dilution: WB:1:1000-1:5000
Reactivity:	Mouse, Human
Host:	Rabbit
Isotype:	IgG
Clonality:	Polyclonal
Immunogen:	Recombinant Human Clavesin-2 protein (1-327AA)
Formulation:	Preservative: 0.03% Proclin 300 Constituents: 50% Glycerol, 0.01M PBS, PH 7.4
Concentration:	lot specific
Purification:	>95%, Protein G purified
Conjugation:	Unconjugated
Storage:	Upon receipt, store at -20°C or -80°C. Avoid repeated freeze.
Stability:	1 year from dispatch.
Database Link:	Q5SYC1
Background:	Required for normal morphology of late endosomes and/or lysosomes in neurons By similarity. Binds phosphatidylinositol 3,5-bisphosphate (PtdIns(3,5)P2).



[View online »](#)

Product images:

Western blot

All lanes: CLVS2 antibody at 16µg/ml + Mouse
brain tissue

Secondary

Goat polyclonal to rabbit IgG at 1/10000 dilution

Predicted band size: 38, 22 kDa

Observed band size: 38 kDa