

## Product datasheet for **TA388090**

### IFI44L Rabbit Polyclonal Antibody

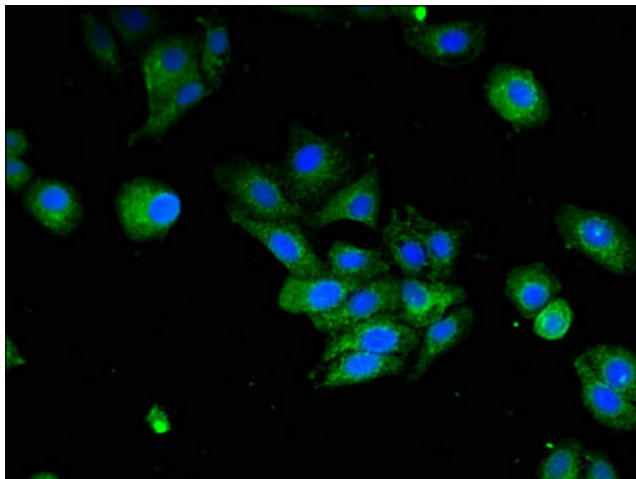
#### Product data:

Product Type:	Primary Antibodies
Applications:	IF, WB
Recommended Dilution:	Recommended dilution: WB:1:500-1:5000, IF:1:50-1:200
Reactivity:	Mouse, Human
Host:	Rabbit
Isotype:	IgG
Clonality:	Polyclonal
Immunogen:	Recombinant Human Interferon-induced protein 44-like protein (206-307AA)
Formulation:	Preservative: 0.03% Proclin 300 Constituents: 50% Glycerol, 0.01M PBS, pH 7.4
Concentration:	lot specific
Purification:	>95%, Protein G purified
Conjugation:	Unconjugated
Storage:	Upon receipt, store at -20°C or -80°C. Avoid repeated freeze.
Stability:	1 year from dispatch.
Database Link:	<a href="#">Q53G44</a>
Background:	Exhibits a low antiviral activity against hepatitis C virus.

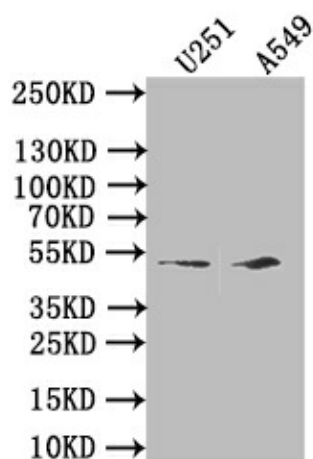


[View online »](#)

## Product images:



Immunofluorescent analysis of HepG2 cells using TA388090 at dilution of 1:100 and Alexa Fluor 488-conjugated AffiniPure Goat Anti-Rabbit IgG(H+L)



Western Blot  
Positive WB detected in: HepG2 whole cell lysate, A549 whole cell lysate, NIH/3T3 whole cell lysate  
All lanes: IFI44L antibody at 2.5µg/ml  
Secondary  
Goat polyclonal to rabbit IgG at 1/50000 dilution  
Predicted band size: 52, 19 kDa  
Observed band size: 52 kDa