

## Product datasheet for **TA388088**

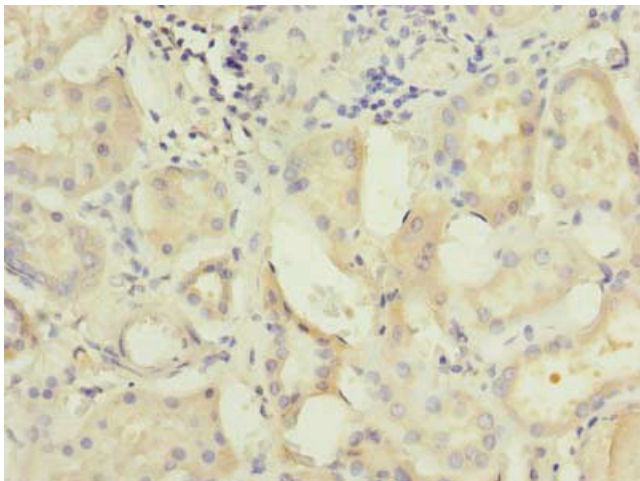
### C5orf22 Rabbit Polyclonal Antibody

#### Product data:

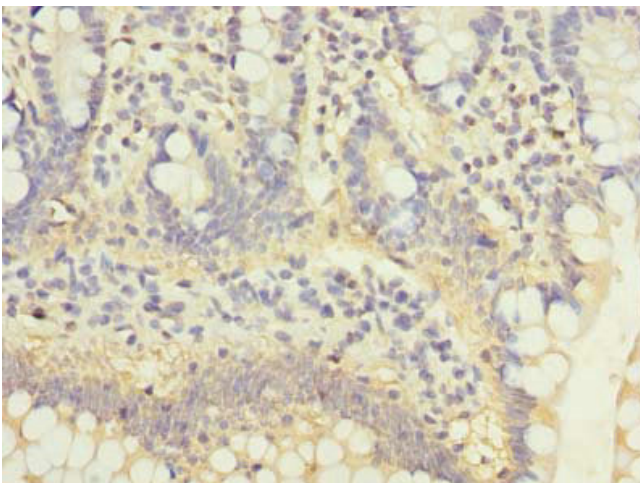
Product Type:	Primary Antibodies
Applications:	IHC, WB
Recommended Dilution:	Recommended dilution: WB:1:500-1:2000, IHC:1:20-1:200
Reactivity:	Mouse, Human
Host:	Rabbit
Isotype:	IgG
Clonality:	Polyclonal
Immunogen:	Recombinant Human UPF0489 protein C5orf22 protein (101-420AA)
Formulation:	Preservative: 0.03% Proclin 300 Constituents: 50% Glycerol, 0.01M PBS, PH 7.4
Concentration:	lot specific
Purification:	>95%, Protein G purified
Conjugation:	Unconjugated
Storage:	Upon receipt, store at -20°C or -80°C. Avoid repeated freeze.
Stability:	1 year from dispatch.
Database Link:	<a href="#">Q49AR2</a>



[View online »](#)

**Product images:**

Immunohistochemistry of paraffin-embedded human kidney tissue using TA388088 at dilution of 1:100



Immunohistochemistry of paraffin-embedded human small intestine tissue using TA388088 at dilution of 1:100



Western blot

All lanes: C5orf22 antibody at 8 $\mu$ g/ml + Mouse brain tissue

Secondary

Goat polyclonal to rabbit IgG at 1/10000 dilution

Predicted band size: 50, 21, 19 kDa

Observed band size: 50 kDa