

Product datasheet for **TA388086**

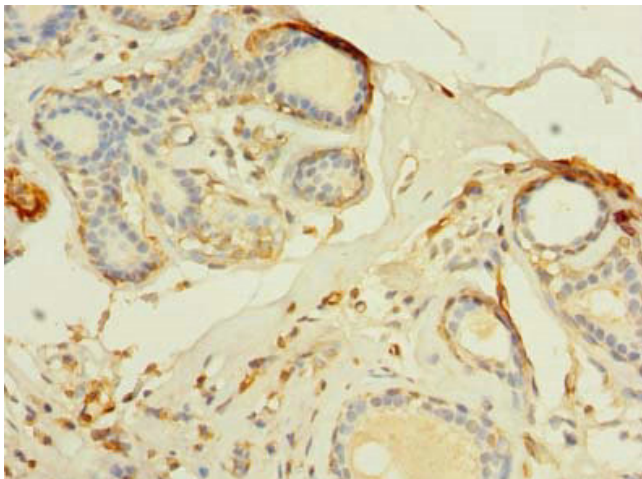
TMEM176B Rabbit Polyclonal Antibody

Product data:

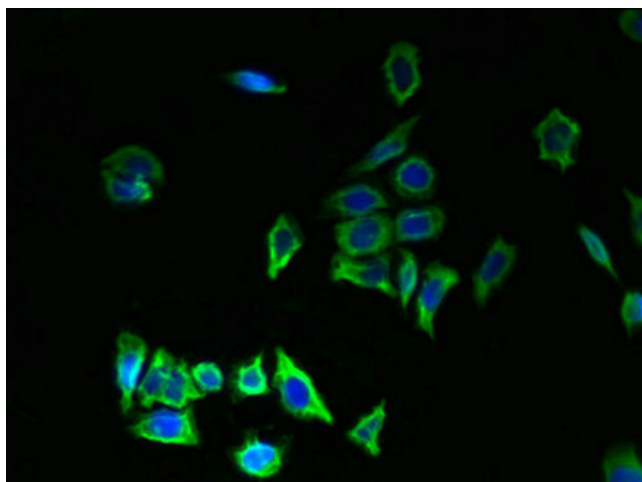
Product Type:	Primary Antibodies
Applications:	IF, IHC, WB
Recommended Dilution:	Recommended dilution: WB:1:500-1:2000, IHC:1:20-1:200, IF:1:50-1:200
Reactivity:	Human
Host:	Rabbit
Isotype:	IgG
Clonality:	Polyclonal
Immunogen:	Recombinant Human Transmembrane protein 176B protein (1-64AA)
Formulation:	Preservative: 0.03% Proclin 300 Constituents: 50% Glycerol, 0.01M PBS, PH 7.4
Concentration:	lot specific
Purification:	>95%, Protein G purified
Conjugation:	Unconjugated
Storage:	Upon receipt, store at -20°C or -80°C. Avoid repeated freeze.
Stability:	1 year from dispatch.
Database Link:	Q3YBM2
Background:	May play a role in the process of maturation of dendritic cells. Required for the development of cerebellar granule cells (By similarity).



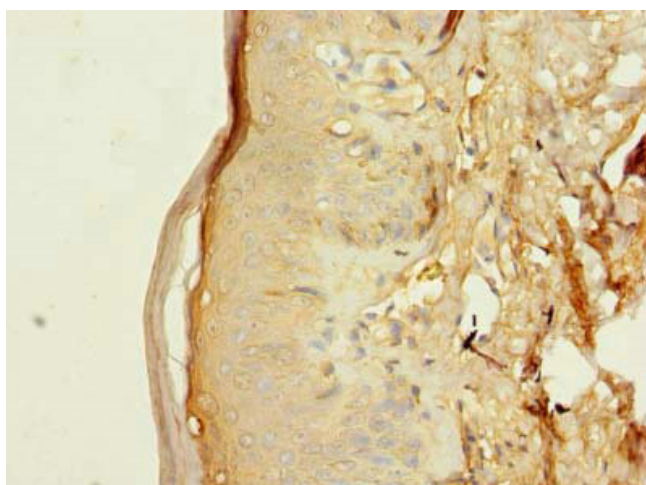
[View online »](#)

Product images:

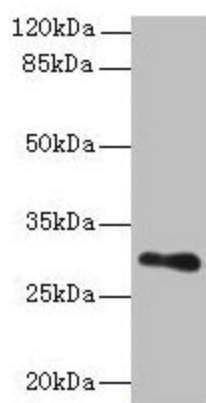
Immunohistochemistry of paraffin-embedded human breast cancer using TA388086 at dilution of 1:100



Immunofluorescent analysis of LO2 cells using TA388086 at dilution of 1:100 and Alexa Fluor 488-conjugated AffiniPure Goat Anti-Rabbit IgG(H+L)



Immunohistochemistry of paraffin-embedded human skin tissue using TA388086 at dilution of 1:100



Western blot
 All lanes: TMEM176B antibody at 8µg/ml +
 Human placenta tissue
 Secondary
 Goat polyclonal to rabbit IgG at 1/10000 dilution
 Predicted band size: 30, 26 kDa
 Observed band size: 30 kDa