

## Product datasheet for **TA388081M**

### CPSF6 Rabbit Polyclonal Antibody

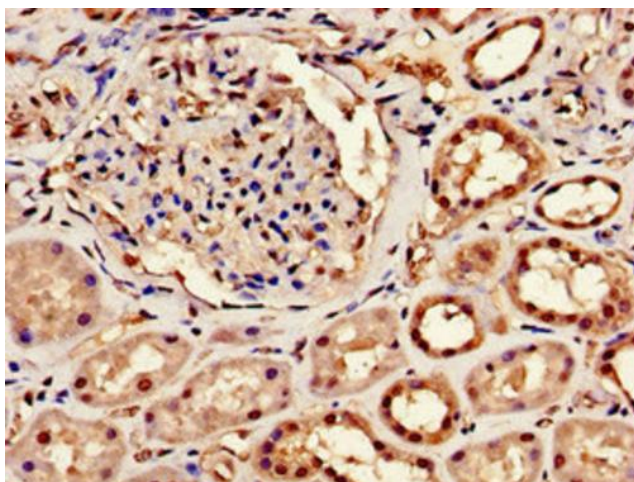
#### Product data:

Product Type:	Primary Antibodies
Applications:	IF, IHC, WB
Recommended Dilution:	Recommended dilution: WB:1:500-1:5000, IHC:1:20-1:200, IF:1:50-1:200
Reactivity:	Mouse, Human
Host:	Rabbit
Isotype:	IgG
Clonality:	Polyclonal
Immunogen:	Recombinant Human Cleavage and polyadenylation specificity factor subunit 6 protein (186-226AA)
Formulation:	Preservative: 0.03% Proclin 300 Constituents: 50% Glycerol, 0.01M PBS, pH 7.4
Concentration:	lot specific
Purification:	>95%, Protein G purified
Conjugation:	Unconjugated
Storage:	Upon receipt, store at -20°C or -80°C. Avoid repeated freeze.
Stability:	1 year from dispatch.
Database Link:	<a href="#">Q16630</a>
Background:	Component of the cleavage factor Im complex (CFIm) that plays a key role in pre-mRNA 3'-processing. Involved in association with NUDT21/CPSF5 in pre-mRNA 3'-end poly(A) site cleavage and poly(A) addition. CPSF6 binds to cleavage and polyadenylation RNA substrates and promotes RNA looping.

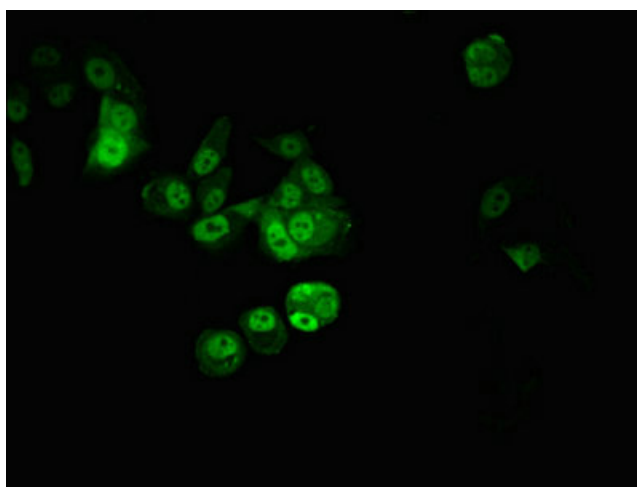


[View online »](#)

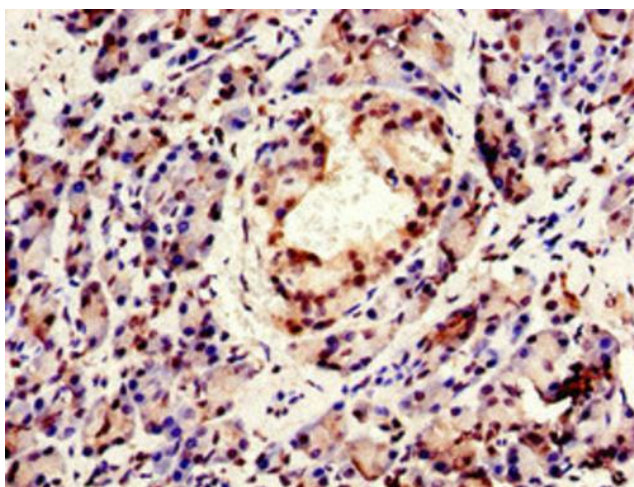
## Product images:



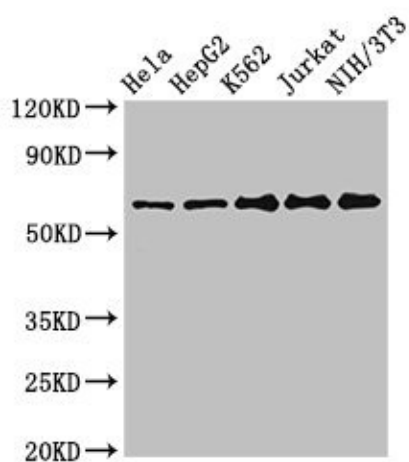
Immunohistochemistry of paraffin-embedded human kidney tissue using [TA388081] at dilution of 1:100



Immunofluorescent analysis of MCF-7 cells using [TA388081] at dilution of 1:100 and Alexa Fluor 488-conjugated AffiniPure Goat Anti-Rabbit IgG(H+L)



Immunohistochemistry of paraffin-embedded human pancreatic tissue using [TA388081] at dilution of 1:100



#### Western Blot

Positive WB detected in: HeLa whole cell lysate, HepG2 whole cell lysate, K562 whole cell lysate, Jurkat whole cell lysate, NIH/3T3 whole cell lysate  
All lanes: CPSF6 antibody at 3µg/ml

#### Secondary

Goat polyclonal to rabbit IgG at 1/50000 dilution  
Predicted band size: 60, 64, 53 kDa  
Observed band size: 60 kDa