

Product datasheet for **TA388064M**

RHD Rabbit Polyclonal Antibody

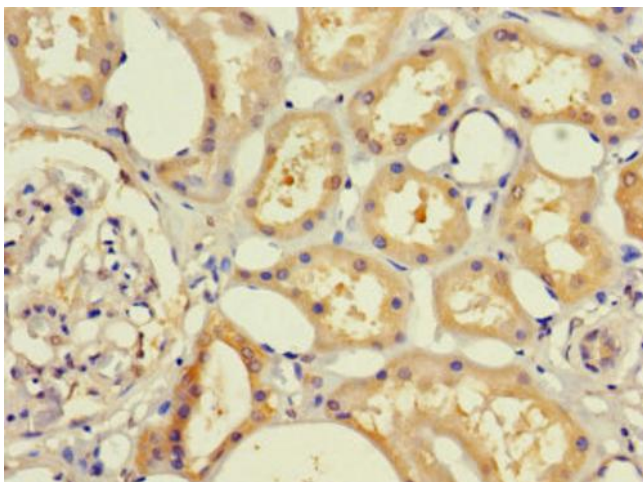
Product data:

Product Type:	Primary Antibodies
Applications:	IF, IHC, WB
Recommended Dilution:	Recommended dilution: WB:1:2000-1:5000, IHC:1:20-1:200, IF:1:50-1:200
Reactivity:	Mouse, Human
Host:	Rabbit
Isotype:	IgG
Clonality:	Polyclonal
Immunogen:	Recombinant Human Blood group Rh(D) polypeptide protein (32-76AA)
Formulation:	Preservative: 0.03% Proclin 300 Constituents: 50% Glycerol, 0.01M PBS, PH 7.4
Concentration:	lot specific
Purification:	>95%, Protein G purified
Conjugation:	Unconjugated
Storage:	Upon receipt, store at -20°C or -80°C. Avoid repeated freeze.
Stability:	1 year from dispatch.
Database Link:	Q02161
Background:	May be part of an oligomeric complex which is likely to have a transport or channel function in the erythrocyte membrane.

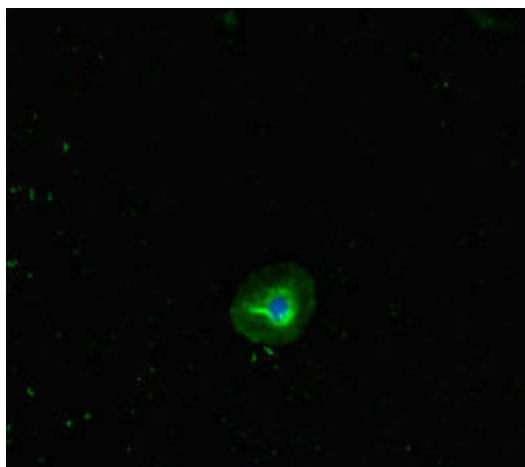


[View online »](#)

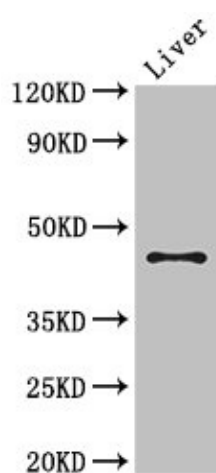
Product images:



Immunohistochemistry of paraffin-embedded human kidney tissue using [TA388064] at dilution of 1:100



Immunofluorescent analysis of A549 cells using [TA388064] at dilution of 1:100 and Alexa Fluor 488-conjugated AffiniPure Goat Anti-Rabbit IgG(H+L)



Western Blot

Positive WB detected in: Mouse liver tissue

All lanes: RHD antibody at 3 μ g/ml

Secondary

Goat polyclonal to rabbit IgG at 1/50000 dilution

Predicted band size: 46, 35, 54, 44, 42 kDa

Observed band size: 46 kDa