

Product datasheet for **TA388060**

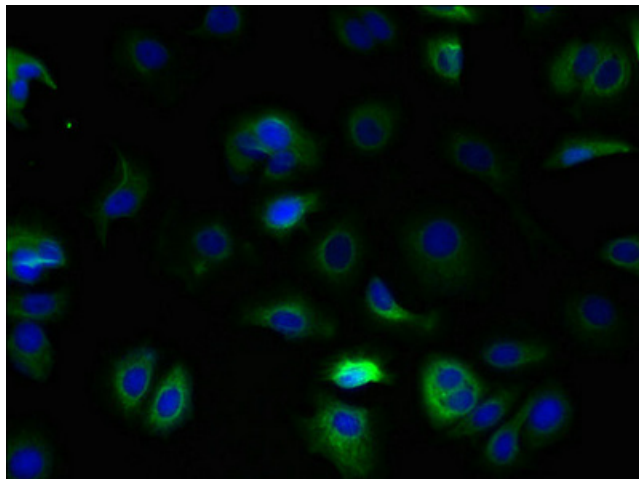
TSPAN5 Rabbit Polyclonal Antibody

Product data:

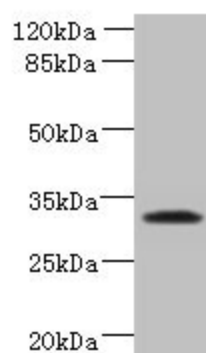
Product Type:	Primary Antibodies
Applications:	IF, WB
Recommended Dilution:	Recommended dilution: WB:1:1000-1:5000, IF:1:50-1:200
Reactivity:	Human
Host:	Rabbit
Isotype:	IgG
Clonality:	Polyclonal
Immunogen:	Recombinant Human Tetraspanin-5 protein (114-232AA)
Formulation:	Preservative: 0.03% Proclin 300 Constituents: 50% Glycerol, 0.01M PBS, PH 7.4
Concentration:	lot specific
Purification:	Antigen Affinity Purified
Conjugation:	Unconjugated
Storage:	Upon receipt, store at -20°C or -80°C. Avoid repeated freeze.
Stability:	1 year from dispatch.
Database Link:	P62079
Background:	integral component of plasma membrane, plasma membrane, enzyme binding, establishment of protein localization to plasma membrane, positive regulation of Notch signaling pathway, protein maturation



[View online »](#)

Product images:

Immunofluorescent analysis of MCF-7 cells using TA388060 at dilution of 1:100 and Alexa Fluor 488-conjugated AffiniPure Goat Anti-Rabbit IgG(H+L)



Western blot
All lanes: TSPAN5 antibody at 1.2µg/ml + Jurkat whole cell lysate
Secondary
Goat polyclonal to rabbit IgG at 1/10000 dilution
Predicted band size: 31 kDa
Observed band size: 31 kDa