

## Product datasheet for **TA388059M**

### **NAA20 Rabbit Polyclonal Antibody**

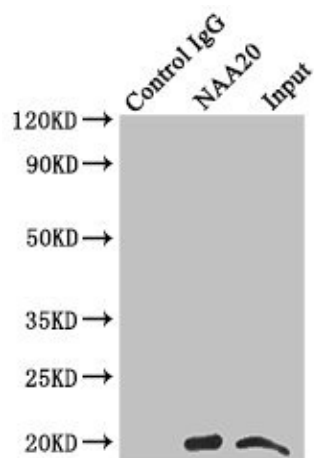
#### **Product data:**

Product Type:	Primary Antibodies
Applications:	IP, WB
Recommended Dilution:	Recommended dilution: WB:1:1000-1:5000, IP:1:200-1:2000
Reactivity:	Rat, Human
Host:	Rabbit
Isotype:	IgG
Clonality:	Polyclonal
Immunogen:	Recombinant Human N-alpha-acetyltransferase 20 protein (49-178AA)
Formulation:	PBS with 0.02% sodium azide, 50% glycerol, pH7.3.
Concentration:	lot specific
Purification:	Antigen Affinity Purified
Conjugation:	Unconjugated
Storage:	Upon receipt, store at -20°C or -80°C. Avoid repeated freeze.
Stability:	1 year from dispatch.
Database Link:	<a href="#">P61599</a>
Background:	Catalytic subunit of the NatB complex which catalyzes acetylation of the N-terminal methionine residues of peptides beginning with Met-Asp, Met-Glu, Met-Asn and Met-Gln. Proteins with cell cycle functions are overrepresented in the pool of NatB substrates. Required for maintaining the structure and function of actomyosin fibers and for proper cellular migration.

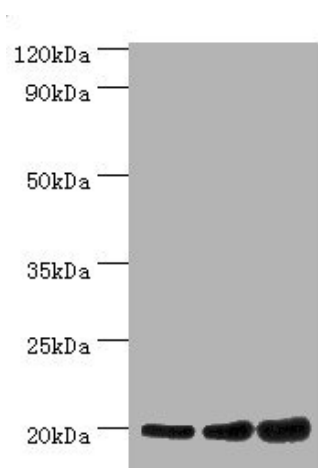


[View online »](#)

## Product images:



Immunoprecipitating NAA20 in HeLa whole cell lysate  
 Lane 1: Rabbit control IgG instead of (1 $\mu$ g) instead of [TA388059] in HeLa whole cell lysate. For western blotting, a HRP-conjugated anti-rabbit IgG, specific to the non-reduced form of IgG was used as the Secondary antibody (1/50000)  
 Lane 2: [TA388059] (4 $\mu$ g) + HeLa whole cell lysate (500 $\mu$ g)  
 Lane 3: HeLa whole cell lysate (20 $\mu$ g)



Western blot  
 All lanes: NAA20 antibody at 10 $\mu$ g/ml  
 Lane 1: HeLa whole cell lysate  
 Lane 2: Rat brain tissue  
 Lane 3: 293T whole cell lysate  
 Secondary  
 Goat polyclonal to rabbit IgG at 1/10000 dilution  
 Predicted band size: 21, 13 kDa  
 Observed band size: 21 kDa