

## Product datasheet for **TA388058**

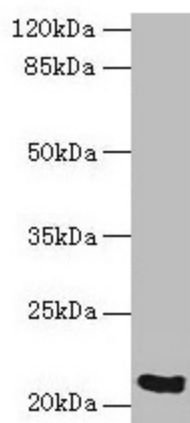
### SPCS3 Rabbit Polyclonal Antibody

#### Product data:

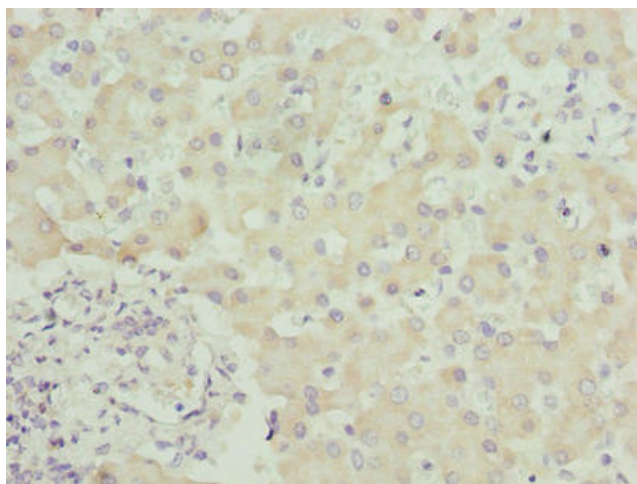
Product Type:	Primary Antibodies
Applications:	IHC, WB
Recommended Dilution:	Recommended dilution: WB:1:500-1:2000, IHC:1:20-1:200
Reactivity:	Mouse, Human
Host:	Rabbit
Isotype:	IgG
Clonality:	Polyclonal
Immunogen:	Recombinant Human Signal peptidase complex subunit 3 protein (33-180AA)
Formulation:	Preservative: 0.03% Proclin 300 Constituents: 50% Glycerol, 0.01M PBS, PH 7.4
Concentration:	lot specific
Purification:	Antigen Affinity Purified
Conjugation:	Unconjugated
Storage:	Upon receipt, store at -20°C or -80°C. Avoid repeated freeze.
Stability:	1 year from dispatch.
Database Link:	<a href="#">P61009</a>
Background:	Component of the microsomal signal peptidase complex which removes signal peptides from nascent proteins as they are translocated into the lumen of the endoplasmic reticulum.



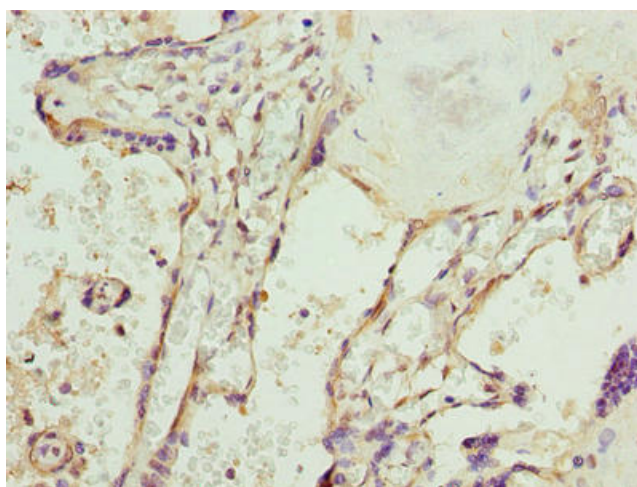
[View online »](#)

**Product images:**

Western blot  
All lanes: SPCS3 antibody at 0.1 $\mu$ g/ml + Mouse kidney tissue  
Secondary  
Goat polyclonal to rabbit at 1/10000 dilution  
Predicted band size: 21 kDa  
Observed band size: 21 kDa



Immunohistochemistry of paraffin-embedded human liver tissue using TA388058 at dilution of 1:100



Immunohistochemistry of paraffin-embedded human placenta tissue using TA388058 at dilution of 1:100