

Product datasheet for **TA388057M**

NRXN1 Rabbit Polyclonal Antibody

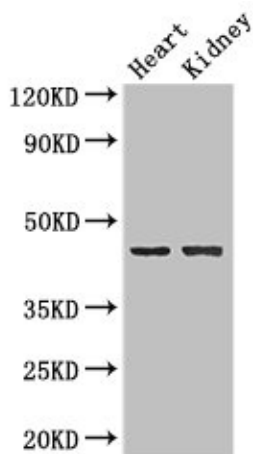
Product data:

Product Type:	Primary Antibodies
Applications:	IF, WB
Recommended Dilution:	Recommended dilution: WB:1:2000-1:5000, IF:1:50-1:200
Reactivity:	Mouse, Human
Host:	Rabbit
Isotype:	IgG
Clonality:	Polyclonal
Immunogen:	Recombinant Human Neurexin-1-beta protein (184-363AA)
Formulation:	Preservative: 0.03% Proclin 300 Constituents: 50% Glycerol, 0.01M PBS, PH 7.4
Concentration:	lot specific
Purification:	>95%, Protein G purified
Conjugation:	Unconjugated
Storage:	Upon receipt, store at -20°C or -80°C. Avoid repeated freeze.
Stability:	1 year from dispatch.
Database Link:	P58400
Background:	Neuronal cell surface protein that may be involved in cell recognition and cell adhesion by forming intracellular junctions through binding to neuroligins. May play a role in formation or maintenance of synaptic junctions. May mediate intracellular signaling. May play a role in angiogenesis (By similarity).

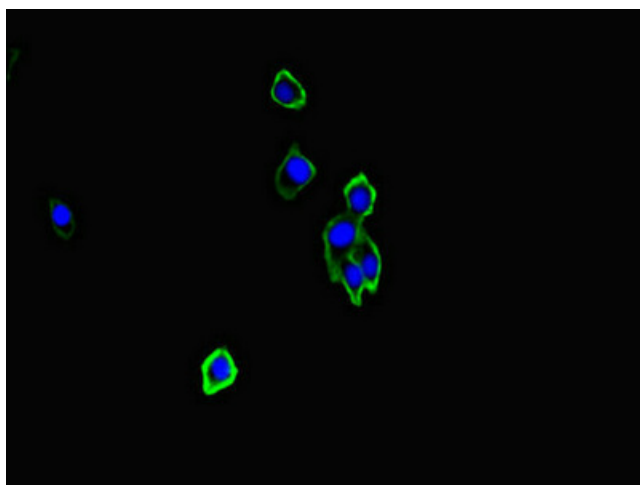


[View online »](#)

Product images:



Western Blot
 Positive WB detected in: Mouse heart tissue,
 Mouse kidney tissue
 All lanes: NRXN1 antibody at 2 μ g/ml
 Secondary
 Goat polyclonal to rabbit IgG at 1/50000 dilution
 Predicted band size: 47, 51, 162, 165, 170, 16 kDa
 Observed band size: 47 kDa



Immunofluorescent analysis of HepG2 cells using
 [TA388057] at dilution of 1:100 and Alexa Fluor
 488-conjugated AffiniPure Goat Anti-Rabbit
 IgG(H+L)