

## Product datasheet for **TA388057**

### **NRXN1 Rabbit Polyclonal Antibody**

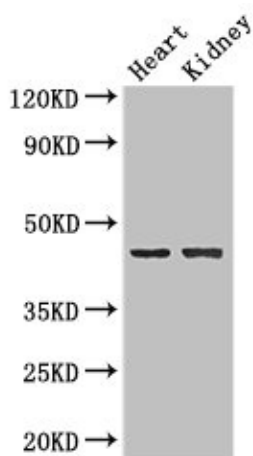
#### **Product data:**

<b>Product Type:</b>	Primary Antibodies
<b>Applications:</b>	IF, WB
<b>Recommended Dilution:</b>	Recommended dilution: WB:1:2000-1:5000, IF:1:50-1:200
<b>Reactivity:</b>	Mouse, Human
<b>Host:</b>	Rabbit
<b>Isotype:</b>	IgG
<b>Clonality:</b>	Polyclonal
<b>Immunogen:</b>	Recombinant Human Neurexin-1-beta protein (184-363AA)
<b>Formulation:</b>	Preservative: 0.03% Proclin 300 Constituents: 50% Glycerol, 0.01M PBS, PH 7.4
<b>Concentration:</b>	lot specific
<b>Purification:</b>	>95%, Protein G purified
<b>Conjugation:</b>	Unconjugated
<b>Storage:</b>	Upon receipt, store at -20°C or -80°C. Avoid repeated freeze.
<b>Stability:</b>	1 year from dispatch.
<b>Database Link:</b>	<a href="#">P58400</a>
<b>Background:</b>	Neuronal cell surface protein that may be involved in cell recognition and cell adhesion by forming intracellular junctions through binding to neuroligins. May play a role in formation or maintenance of synaptic junctions. May mediate intracellular signaling. May play a role in angiogenesis (By similarity).



[View online »](#)

## Product images:



## Western Blot

Positive WB detected in: Mouse heart tissue,  
Mouse kidney tissue

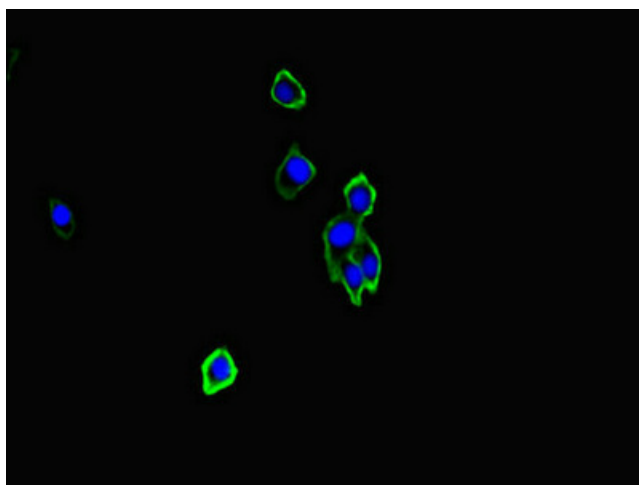
All lanes: NRXN1 antibody at 2 $\mu$ g/ml

## Secondary

Goat polyclonal to rabbit IgG at 1/50000 dilution

Predicted band size: 47, 51, 162, 165, 170, 16 kDa

Observed band size: 47 kDa



Immunofluorescent analysis of HepG2 cells using  
TA388057 at dilution of 1:100 and Alexa Fluor  
488-conjugated AffiniPure Goat Anti-Rabbit  
IgG(H+L)