

Product datasheet for **TA388055M**

EVC Rabbit Polyclonal Antibody

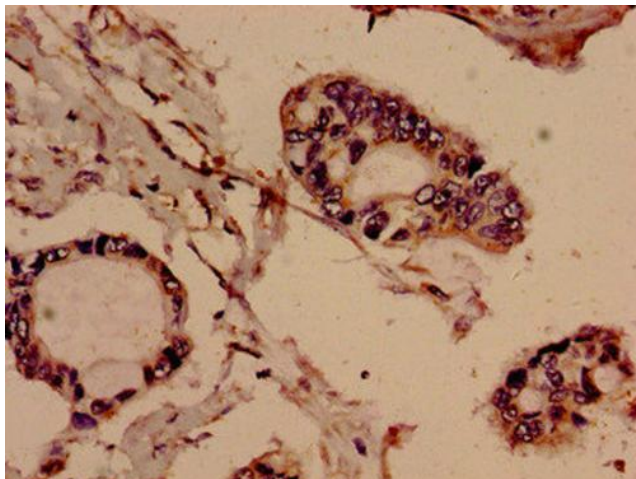
Product data:

Product Type:	Primary Antibodies
Applications:	IHC, WB
Recommended Dilution:	Recommended dilution: WB:1:500-1:5000, IHC:1:20-1:200
Reactivity:	Human
Host:	Rabbit
Isotype:	IgG
Clonality:	Polyclonal
Immunogen:	Recombinant Human Ellis-van Creveld syndrome protein (493-602AA)
Formulation:	Preservative: 0.03% Proclin 300 Constituents: 50% Glycerol, 0.01M PBS, pH 7.4
Concentration:	lot specific
Purification:	>95%, Protein G purified
Conjugation:	Unconjugated
Storage:	Upon receipt, store at -20°C or -80°C. Avoid repeated freeze.
Stability:	1 year from dispatch.
Database Link:	P57679
Background:	Acts as a positive mediator of Hedgehog signaling indispensable for normal endochondral growth and skeletal development.

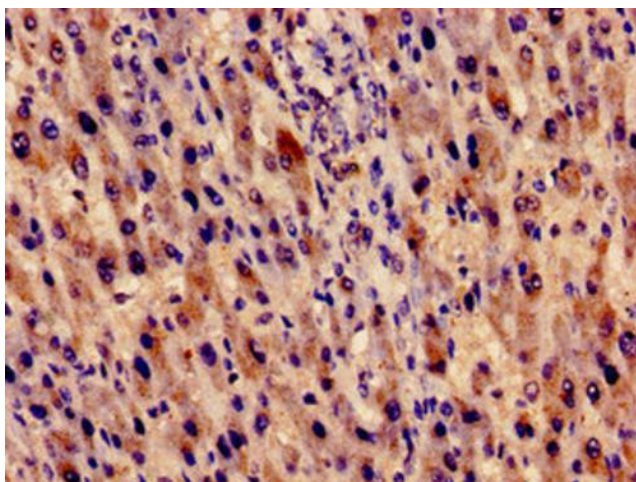


[View online »](#)

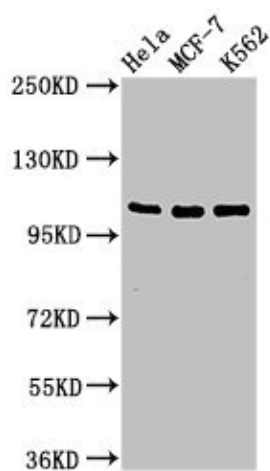
Product images:



Immunohistochemistry analysis of human pancreatic cancer using [TA388055] at dilution of 1:100



Immunocytochemistry analysis of human liver cancer using [TA388055] at dilution of 1:100



Western Blot

Positive WB detected in: HeLa whole cell lysate,
MCF-7 whole cell lysate, K562 whole cell lysate

All lanes: EVC antibody at 2 μ g/ml

Secondary

Goat polyclonal to rabbit IgG at 1/50000 dilution

Predicted band size: 112 kDa

Observed band size: 112 kDa