

## Product datasheet for **TA388053**

### EMP3 Rabbit Polyclonal Antibody

#### Product data:

Product Type:	Primary Antibodies
Applications:	IF, WB
Recommended Dilution:	Recommended dilution: WB:1:1000-1:5000, IF:1:50-1:200
Reactivity:	Mouse, Human
Host:	Rabbit
Isotype:	IgG
Clonality:	Polyclonal
Immunogen:	Recombinant Human Epithelial membrane protein 3 protein (25-65AA)
Formulation:	Preservative: 0.03% Proclin 300 Constituents: 50% Glycerol, 0.01M PBS, PH 7.4
Concentration:	lot specific
Purification:	>95%, Protein G purified
Conjugation:	Unconjugated
Storage:	Upon receipt, store at -20°C or -80°C. Avoid repeated freeze.
Stability:	1 year from dispatch.
Database Link:	<a href="#">P54852</a>
Background:	Probably involved in cell proliferation and cell-cell interactions.



[View online »](#)

## Product images:



## Western Blot

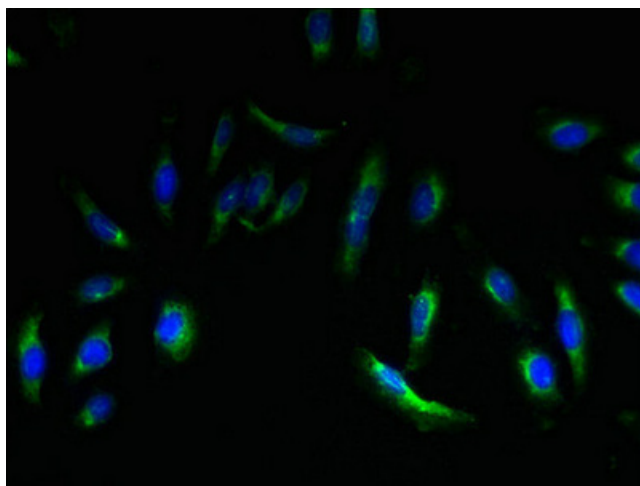
All lanes: EMP3 antibody at 3 $\mu$ g/ml + Mouse heart tissue

## Secondary

Goat polyclonal to rabbit IgG at 1/10000 dilution

Predicted band size: 19 kDa

Observed band size: 19, 31 kDa



Immunofluorescent analysis of HeLa cells using TA388053 at dilution of 1:100 and Alexa Fluor 488-conjugated AffiniPure Goat Anti-Rabbit IgG(H+L)