

Product datasheet for **TA388050M**

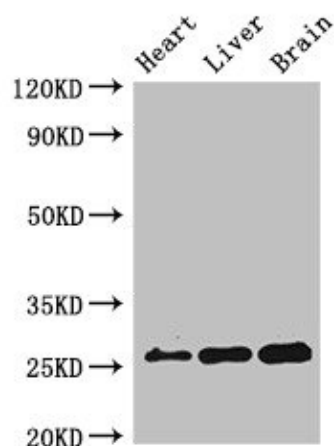
RND2 Rabbit Polyclonal Antibody

Product data:

Product Type:	Primary Antibodies
Applications:	WB
Recommended Dilution:	Recommended dilution: WB:1:500-1:5000
Reactivity:	Mouse, Human
Host:	Rabbit
Isotype:	IgG
Clonality:	Polyclonal
Immunogen:	Recombinant Human Rho-related GTP-binding protein RhoN protein (104-163AA)
Formulation:	Preservative: 0.03% Proclin 300 Constituents: 50% Glycerol, 0.01M PBS, pH 7.4
Concentration:	lot specific
Purification:	>95%, Protein G purified
Conjugation:	Unconjugated
Storage:	Upon receipt, store at -20°C or -80°C. Avoid repeated freeze.
Stability:	1 year from dispatch.
Database Link:	P52198
Background:	May be specifically involved in neuronal and hepatic functions. Is a C3 toxin-insensitive member of the Rho subfamily (By similarity).



[View online »](#)

Product images:

Western Blot

Positive WB detected in: Mouse heart tissue,
Mouse liver tissue, Mouse brain tissue

All lanes: RND2 antibody at 2µg/ml

Secondary

Goat polyclonal to rabbit IgG at 1/50000 dilution

Predicted band size: 26 kDa

Observed band size: 26 kDa