

Product datasheet for **TA388049M**

NEK3 Rabbit Polyclonal Antibody

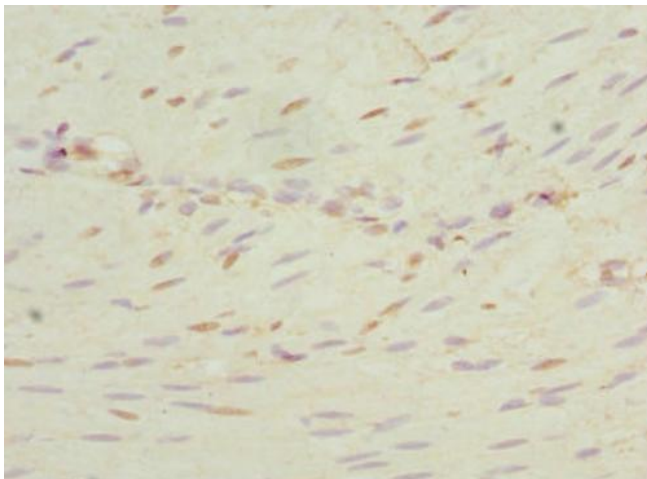
Product data:

| | |
|-----------------------|--|
| Product Type: | Primary Antibodies |
| Applications: | IHC, WB |
| Recommended Dilution: | Recommended dilution: WB:1:1000-1:5000, IHC:1:20-1:200 |
| Reactivity: | Human |
| Host: | Rabbit |
| Isotype: | IgG |
| Clonality: | Polyclonal |
| Immunogen: | Recombinant Human Serine/threonine-protein kinase Nek3 protein (267-506AA) |
| Formulation: | PBS with 0.02% sodium azide, 50% glycerol, pH7.3. |
| Concentration: | lot specific |
| Purification: | Antigen Affinity Purified |
| Conjugation: | Unconjugated |
| Storage: | Upon receipt, store at -20°C or -80°C. Avoid repeated freeze. |
| Stability: | 1 year from dispatch. |
| Database Link: | P51956 |
| Background: | Protein kinase which influences neuronal morphogenesis and polarity through effects on microtubules. Regulates microtubule acetylation in neurons. Contributes to prolactin-mediated phosphorylation of PXN and VAV2. Implicated in prolactin-mediated cytoskeletal reorganization and motility of breast cancer cells through mechanisms involving RAC1 activation and phosphorylation of PXN and VAV2. |

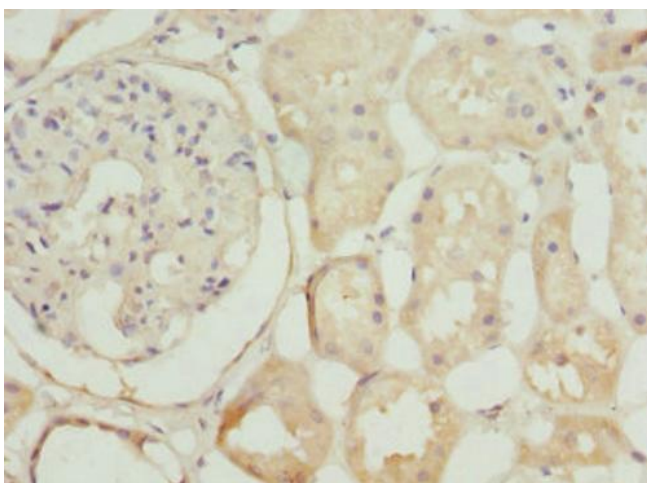


[View online »](#)

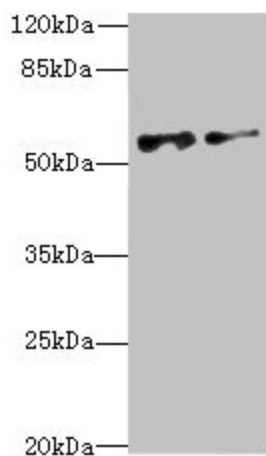
Product images:



Immunohistochemistry of paraffin-embedded human colon cancer using [TA388049] at dilution of 1:100



Immunohistochemistry of paraffin-embedded human kidney tissue using [TA388049] at dilution of 1:100



Western blot

All lanes: NEK3 antibody at 6.04µg/ml

Lane 1: MCF-7 whole cell lysate

Lane 2: Hela whole cell lysate

Secondary

Goat polyclonal to rabbit IgG at 1/10000 dilution

Predicted band size: 58, 56 kDa

Observed band size: 58 kDa