

Product datasheet for **TA388047M**

RPIA Rabbit Polyclonal Antibody

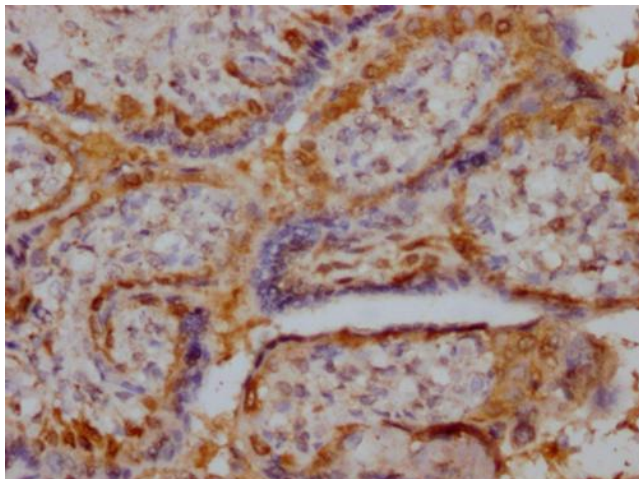
Product data:

Product Type:	Primary Antibodies
Applications:	IHC, WB
Recommended Dilution:	IHC
Reactivity:	Human
Host:	Rabbit
Isotype:	IgG
Clonality:	Polyclonal
Immunogen:	Recombinant Human Ribose-5-phosphate isomerase protein (1-311AA)
Formulation:	Preservative: 0.03% Proclin 300 Constituents: 50% Glycerol, 0.01M PBS, pH 7.4
Concentration:	lot specific
Purification:	>95%, Antigen Affinity purified & Affinity purified
Conjugation:	Unconjugated
Storage:	Upon receipt, store at -20°C or -80°C. Avoid repeated freeze.
Stability:	1 year from dispatch.
Database Link:	P49247
Background:	cytosol, intracellular membrane-bounded organelle, identical protein binding, ribose-5-phosphate isomerase activity, D-ribose metabolic process, pentose-phosphate shunt, pentose-phosphate shunt, non-oxidative branch

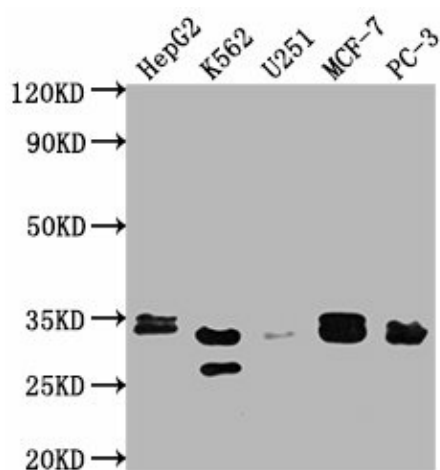


[View online »](#)

Product images:



IHC image of [TA388047] diluted at 1:400 and staining in paraffin-embedded human placenta tissue performed on a Leica Bond™ system. After dewaxing and hydration, antigen retrieval was mediated by high pressure in a citrate buffer (pH 6.0). Section was blocked with 10% normal goat serum 30min at RT. Then primary antibody (1% BSA) was incubated at 4°C overnight. The primary is detected by a Goat anti-rabbit IgG labeled by HRP and visualized using 0.05% DAB.



Western Blot

Positive WB detected in: HepG2 whole cell lysate, K562 whole cell lysate, U251 whole cell lysate, MCF-7 whole cell lysate, PC-3 whole cell lysate
All lanes: RPIA antibody at 1:2000
Secondary
Goat polyclonal to rabbit IgG at 1/50000 dilution
Predicted band size: 34 kDa
Observed band size: 33 kDa