

Product datasheet for **TA388046M**

RPIA Rabbit Polyclonal Antibody

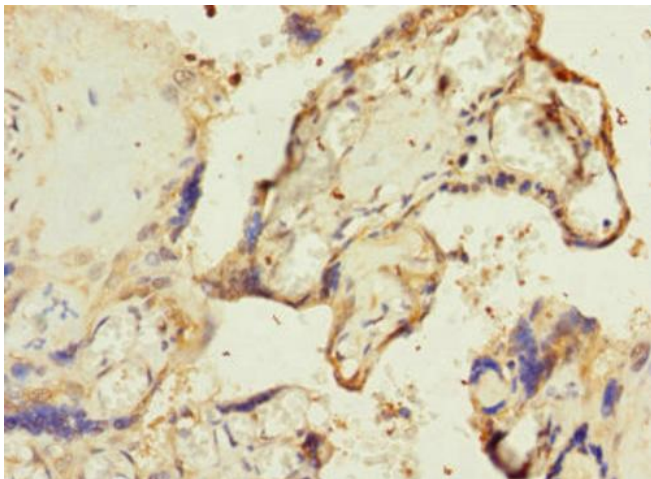
Product data:

Product Type:	Primary Antibodies
Applications:	IHC, WB
Recommended Dilution:	Recommended dilution: WB:1:1000-1:5000, IHC:1:20-1:200
Reactivity:	Mouse, Human
Host:	Rabbit
Isotype:	IgG
Clonality:	Polyclonal
Immunogen:	Recombinant Human Ribose-5-phosphate isomerase protein (82-311AA)
Formulation:	PBS with 0.02% sodium azide, 50% glycerol, pH7.3.
Concentration:	lot specific
Purification:	Antigen Affinity Purified
Conjugation:	Unconjugated
Storage:	Upon receipt, store at -20°C or -80°C. Avoid repeated freeze.
Stability:	1 year from dispatch.
Database Link:	P49247
Background:	cytosol, ribose-5-phosphate isomerase activity, pentose-phosphate shunt

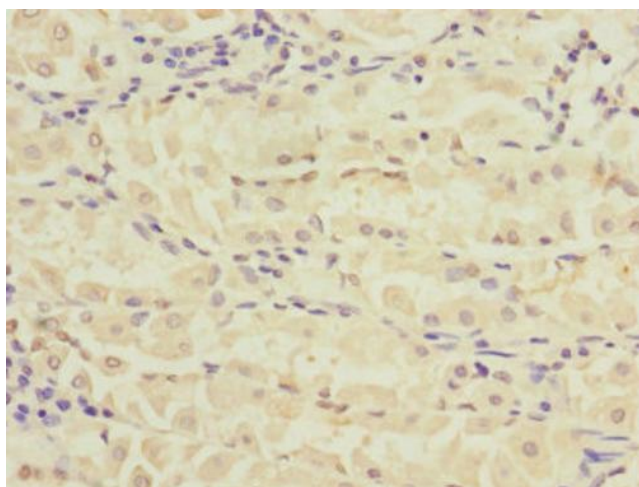


[View online »](#)

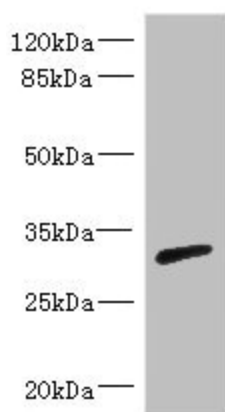
Product images:



Immunohistochemistry of paraffin-embedded human placenta tissue using [TA388046] at dilution of 1:100



Immunohistochemistry of paraffin-embedded human gastric cancer using [TA388046] at dilution of 1:100



Western blot
 All lanes: RPIA antibody IgG at 3.29µg/ml + Mouse kidney tissue
 Secondary
 Goat polyclonal to rabbit IgG at 1/10000 dilution
 Predicted band size: 33 kDa
 Observed band size: 33 kDa