

Product datasheet for **TA388042**

RABIF Rabbit Polyclonal Antibody

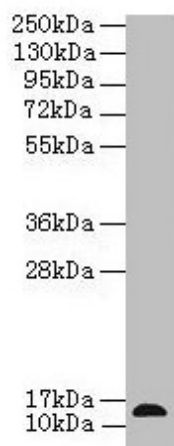
Product data:

Product Type:	Primary Antibodies
Applications:	WB
Recommended Dilution:	Recommended dilution: WB:1:1000-1:5000
Reactivity:	Mouse, Human
Host:	Rabbit
Isotype:	IgG
Clonality:	Polyclonal
Immunogen:	Recombinant Human Guanine nucleotide exchange factor MSS4 protein (1-123AA)
Formulation:	Preservative: 0.03% Proclin 300 Constituents: 50% Glycerol, 0.01M PBS, PH 7.4
Concentration:	lot specific
Purification:	>95%, Protein G purified
Conjugation:	Unconjugated
Storage:	Upon receipt, store at -20°C or -80°C. Avoid repeated freeze.
Stability:	1 year from dispatch.
Database Link:	P47224
Background:	Guanine-nucleotide-releasing protein that acts on members of the SEC4/YPT1/RAB subfamily. Stimulates GDP release from both YPT1 and RAB3A, but is less active on these proteins than on the SEC4 protein. Might play a general role in vesicular transport.



[View online »](#)

Product images:



Western Blot

All lanes: RABIF antibody at 12 μ g/ml + Mouse small intestine tissue

Secondary

Goat polyclonal to rabbit IgG at 1/10000 dilution

Predicted band size: 14 kDa

Observed band size: 14 kDa