

Product datasheet for **TA388039**

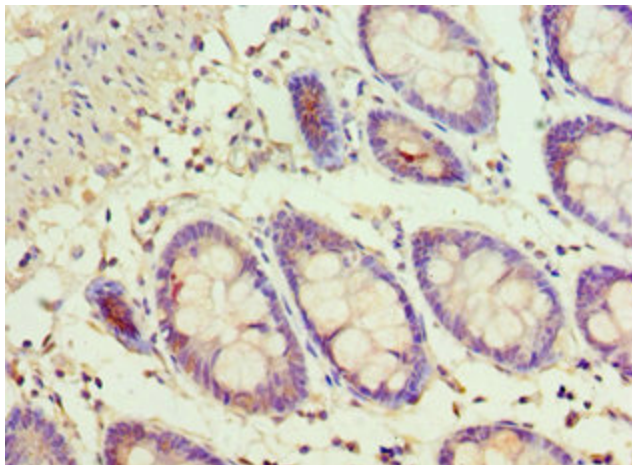
ADSS2 Rabbit Polyclonal Antibody

Product data:

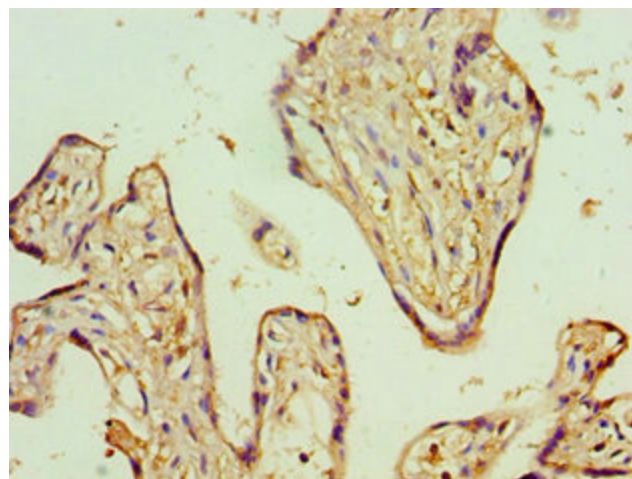
Product Type:	Primary Antibodies
Applications:	IHC, WB
Recommended Dilution:	Recommended dilution: WB:1:500-1:2000, IHC:1:20-1:200
Reactivity:	Mouse, Human
Host:	Rabbit
Isotype:	IgG
Clonality:	Polyclonal
Immunogen:	Recombinant Human Adenylosuccinate synthetase isozyme 2 protein (1-280AA)
Formulation:	PBS with 0.02% sodium azide, 50% glycerol, pH7.3.
Concentration:	lot specific
Purification:	Antigen Affinity Purified
Conjugation:	Unconjugated
Storage:	Upon receipt, store at -20°C or -80°C. Avoid repeated freeze.
Stability:	1 year from dispatch.
Database Link:	P30520
Background:	Plays an important role in the de novo pathway and in the salvage pathway of purine nucleotide biosynthesis. Catalyzes the first committed step in the biosynthesis of AMP from IMP.



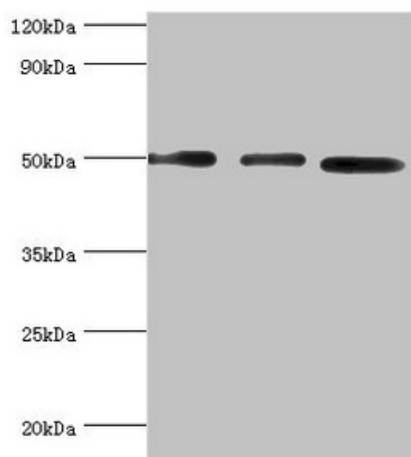
[View online »](#)

Product images:

Immunohistochemistry of paraffin-embedded human colon tissue using TA388039 at dilution of 1:100



Immunohistochemistry of paraffin-embedded human placenta tissue using TA388039 at dilution of 1:100



Western blot

All lanes: Adenylosuccinate synthetase isozyme 2 antibody at 12 μ g/ml

Lane 1: Mouse skeletal muscle tissue

Lane 2: HepG2 whole cell lysate

Lane 3: K562 whole cell lysate

Secondary

Goat polyclonal to rabbit IgG at 1/10000 dilution

Predicted band size: 50 kDa

Observed band size: 50 kDa