

## Product datasheet for **TA388038**

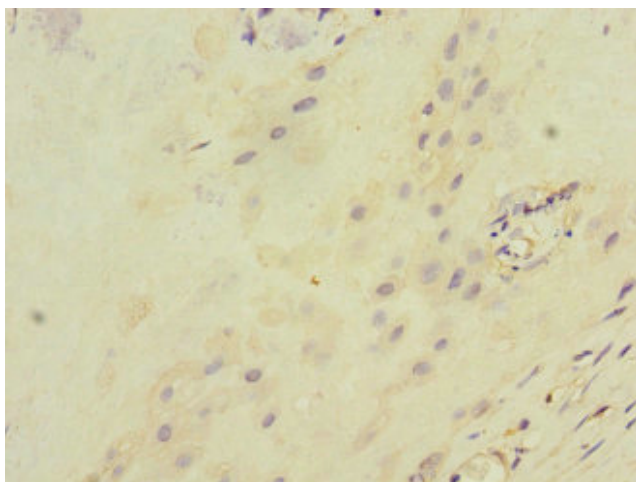
### ITGB8 Rabbit Polyclonal Antibody

#### Product data:

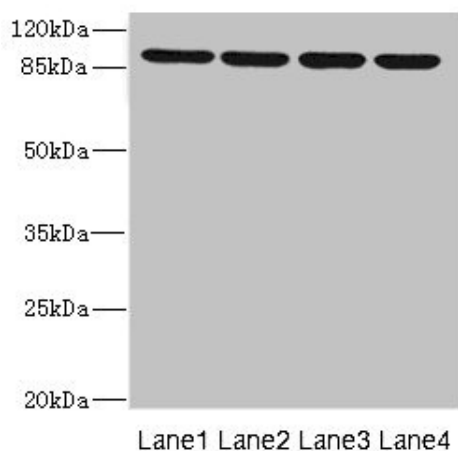
Product Type:	Primary Antibodies
Applications:	IHC, WB
Recommended Dilution:	Recommended dilution: WB:1:1000-1:5000, IHC:1:20-1:200
Reactivity:	Human
Host:	Rabbit
Isotype:	IgG
Clonality:	Polyclonal
Immunogen:	Recombinant Human Integrin beta-8 protein (43-320AA)
Formulation:	PBS with 0.02% sodium azide, 50% glycerol, pH7.3.
Concentration:	lot specific
Purification:	Antigen Affinity Purified
Conjugation:	Unconjugated
Storage:	Upon receipt, store at -20°C or -80°C. Avoid repeated freeze.
Stability:	1 year from dispatch.
Database Link:	<a href="#">P26012</a>
Background:	Integrin alpha-V/beta-8 is a receptor for fibronectin.



[View online »](#)

**Product images:**

Immunohistochemistry of paraffin-embedded human placenta tissue using TA388038 at dilution of 1:100



Western blot  
All lanes: ITGB8 antibody at 1.52 $\mu$ g/ml  
Lane 1: 293T whole cell lysate  
Lane 2: HeLa whole cell lysate  
Lane 3: HepG2 whole cell lysate  
Lane 4: A549 whole cell lysate  
Secondary  
Goat polyclonal to rabbit IgG at 1/10000 dilution  
Predicted band size: 86, 72 kDa  
Observed band size: 86 kDa