

Product datasheet for **TA388037M**

EEF1B2 Rabbit Polyclonal Antibody

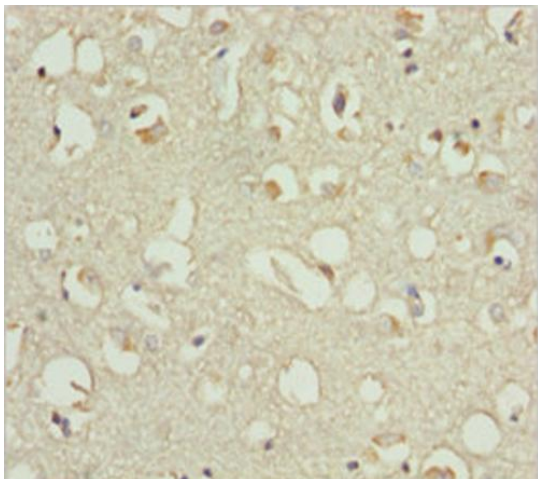
Product data:

Product Type:	Primary Antibodies
Applications:	IHC, WB
Recommended Dilution:	Recommended dilution: WB:1:1000-1:5000, IHC:1:20-1:200
Reactivity:	Human
Host:	Rabbit
Isotype:	IgG
Clonality:	Polyclonal
Immunogen:	Recombinant Human Elongation factor 1-beta protein (1-225AA)
Formulation:	PBS with 0.02% sodium azide, 50% glycerol, pH7.3.
Concentration:	lot specific
Purification:	Antigen Affinity Purified
Conjugation:	Unconjugated
Storage:	Upon receipt, store at -20°C or -80°C. Avoid repeated freeze.
Stability:	1 year from dispatch.
Database Link:	P24534
Background:	EF-1-beta and EF-1-delta stimulate the exchange of GDP bound to EF-1-alpha to GTP.

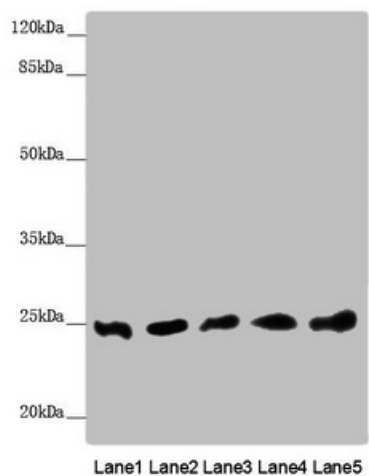


[View online »](#)

Product images:



Immunohistochemistry of paraffin-embedded human brain tissue using [TA388037] at dilution of 1:100



Western blot

All lanes: EEF1B2 antibody at 0.91 µg/ml

Lane 1: PC-3 whole cell lysate

Lane 2: 293T whole cell lysate

Lane 3: Hela whole cell lysate

Lane 4: Jurkat whole cell lysate

Lane 5: Raw264.7 whole cell lysate

Secondary

Goat polyclonal to rabbit IgG at 1/10000 dilution

Predicted band size: 25 kDa

Observed band size: 25 kDa