

## Product datasheet for **TA388036M**

### **SAT1 Rabbit Polyclonal Antibody**

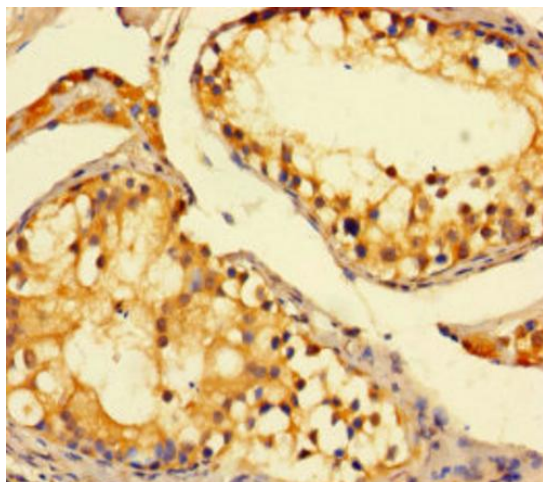
#### **Product data:**

Product Type:	Primary Antibodies
Applications:	IHC, WB
Recommended Dilution:	Recommended dilution: WB:1:1000-1:5000, IHC:1:20-1:200
Reactivity:	Human
Host:	Rabbit
Isotype:	IgG
Clonality:	Polyclonal
Immunogen:	Recombinant Human Diamine acetyltransferase 1 protein (5-171AA)
Formulation:	Preservative: 0.03% Proclin 300 Constituents: 50% Glycerol, 0.01M PBS, PH 7.4
Concentration:	lot specific
Purification:	>95%, Protein G purified
Conjugation:	Unconjugated
Storage:	Upon receipt, store at -20°C or -80°C. Avoid repeated freeze.
Stability:	1 year from dispatch.
Database Link:	<u><a href="#">P21673</a></u>



[View online »](#)

## Product images:



Immunohistochemistry of paraffin-embedded human testis tissue using [TA388036] at dilution of 1:100



Western blot  
All lanes: SAT1 antibody at 2µg/ml  
Lane 1: 293T whole cell lysate  
Lane 2: EC109 whole cell lysate  
Secondary  
Goat polyclonal to rabbit IgG at 1/15000 dilution  
Predicted band size: 21 kDa  
Observed band size: 90 kDa