

## Product datasheet for **TA388030M**

### **DPEP1 Rabbit Polyclonal Antibody**

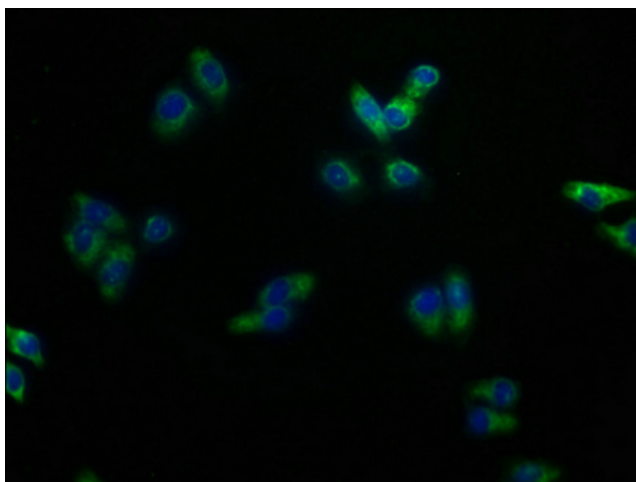
#### **Product data:**

Product Type:	Primary Antibodies
Applications:	IF, WB
Recommended Dilution:	Recommended dilution: WB:1:1000-1:5000, IF:1:50-1:200
Reactivity:	Human
Host:	Rabbit
Isotype:	IgG
Clonality:	Polyclonal
Immunogen:	Recombinant Human Dipeptidase 1 protein (23-252AA)
Formulation:	Preservative: 0.03% Proclin 300 Constituents: 50% Glycerol, 0.01M PBS, pH 7.4
Concentration:	lot specific
Purification:	>95%, Antigen Affinity purified & Affinity purified
Conjugation:	Unconjugated
Storage:	Upon receipt, store at -20°C or -80°C. Avoid repeated freeze.
Stability:	1 year from dispatch.
Database Link:	<a href="#">P16444</a>
Background:	Hydrolyzes a wide range of dipeptides. Implicated in the renal metabolism of glutathione and its conjugates. Converts leukotriene D4 to leukotriene E4; it may play an important role in the regulation of leukotriene activity.

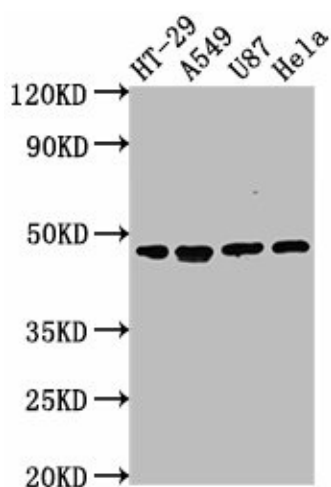


[View online »](#)

## Product images:



Immunofluorescence staining of HepG2 cells with [TA388030] at 1:100, counter-stained with DAPI. The cells were fixed in 4% formaldehyde, permeabilized using 0.2% Triton X-100 and blocked in 10% normal Goat Serum. The cells were then incubated with the antibody overnight at 4°C. The secondary antibody was Alexa Fluor 488-conjugated AffiniPure Goat Anti-Rabbit IgG(H+L).



Western Blot  
Positive WB detected in: HT-29 whole cell lysate, A549 whole cell lysate, U87 whole cell lysate, HeLa whole cell lysate  
All lanes: DPEP1 antibody at 1:2000  
Secondary  
Goat polyclonal to rabbit IgG at 1/50000 dilution  
Predicted band size: 46 kDa  
Observed band size: 46 kDa