

Product datasheet for **TA388027M**

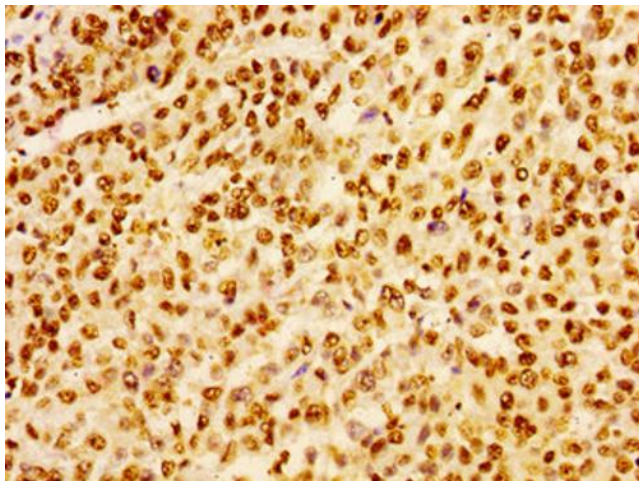
H1-5 Rabbit Polyclonal Antibody

Product data:

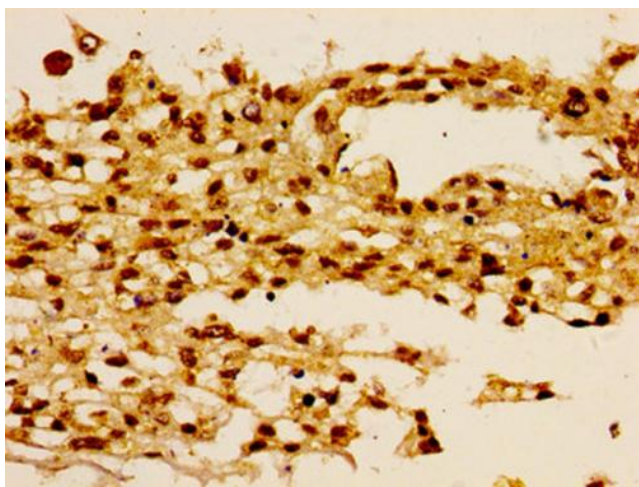
Product Type:	Primary Antibodies
Applications:	IHC, WB
Recommended Dilution:	Recommended dilution: WB:1:50-1:500, IHC:1:20-1:200
Reactivity:	Human
Host:	Rabbit
Isotype:	IgG
Clonality:	Polyclonal
Immunogen:	Peptide sequence around site of Lys (16) derived from Human Histone H1.5
Formulation:	Preservative: 0.03% Proclin 300 Constituents: 50% Glycerol, 0.01M PBS, pH 7.4
Concentration:	lot specific
Purification:	Antigen Affinity Purified
Conjugation:	Unconjugated
Storage:	Upon receipt, store at -20°C or -80°C. Avoid repeated freeze.
Stability:	1 year from dispatch.
Database Link:	P16401
Background:	Histone H1 protein binds to linker DNA between nucleosomes forming the macromolecular structure known as the chromatin fiber. Histones H1 are necessary for the condensation of nucleosome chains into higher-order structured fibers. Acts also as a regulator of individual gene transcription through chromatin remodeling, nucleosome spacing and DNA methylation (By similarity).

[View online »](#)

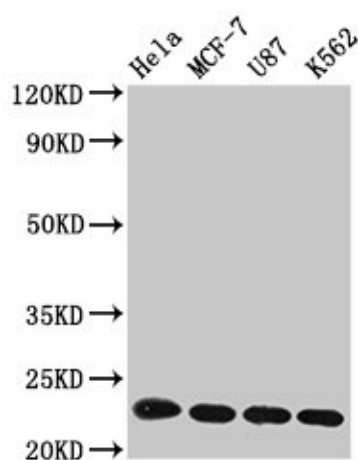
Product images:



Immunohistochemistry of paraffin-embedded human colon cancer using [TA388027] at dilution of 1:100



Immunohistochemistry of paraffin-embedded human melanoma using [TA388027] at dilution of 1:100



Western Blot

Positive WB detected in: HeLa whole cell lysate,
MCF-7 whole cell lysate, U87 whole cell lysate,
K562 whole cell lysate

All lanes: HIST1H1B antibody at 1 μ g/ml

Secondary

Goat polyclonal to rabbit IgG at 1/50000 dilution

Predicted band size: 23 kDa

Observed band size: 23 kDa