

## Product datasheet for **TA388010M**

### H1-4 Rabbit Polyclonal Antibody

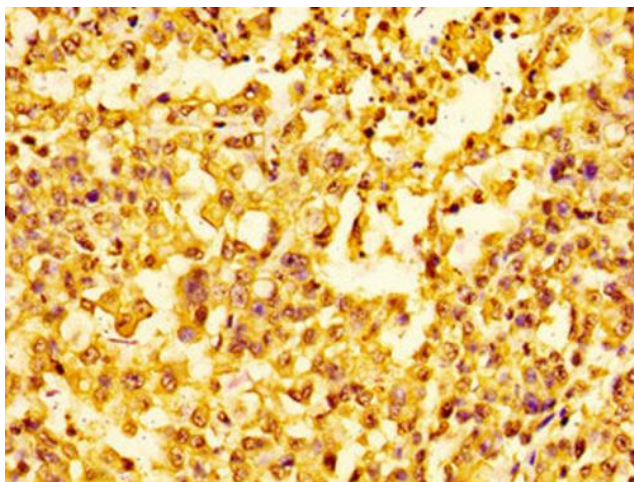
#### Product data:

Product Type:	Primary Antibodies
Applications:	ChIP, IF, IHC, WB
Recommended Dilution:	Recommended dilution: WB:1:500-1:2000, IHC:1:20-1:200, IF:1:50-1:200
Reactivity:	Human
Host:	Rabbit
Isotype:	IgG
Clonality:	Polyclonal
Immunogen:	Peptide sequence around site of Lys (25) derived from Human Histone H1.4
Formulation:	Preservative: 0.03% Proclin 300 Constituents: 50% Glycerol, 0.01M PBS, pH 7.4
Concentration:	lot specific
Purification:	Antigen Affinity Purified
Conjugation:	Unconjugated
Storage:	Upon receipt, store at -20°C or -80°C. Avoid repeated freeze.
Stability:	1 year from dispatch.
Database Link:	<a href="#">P10412</a>
Background:	Histone H1 protein binds to linker DNA between nucleosomes forming the macromolecular structure known as the chromatin fiber. Histones H1 are necessary for the condensation of nucleosome chains into higher-order structured fibers. Acts also as a regulator of individual gene transcription through chromatin remodeling, nucleosome spacing and DNA methylation (By similarity).

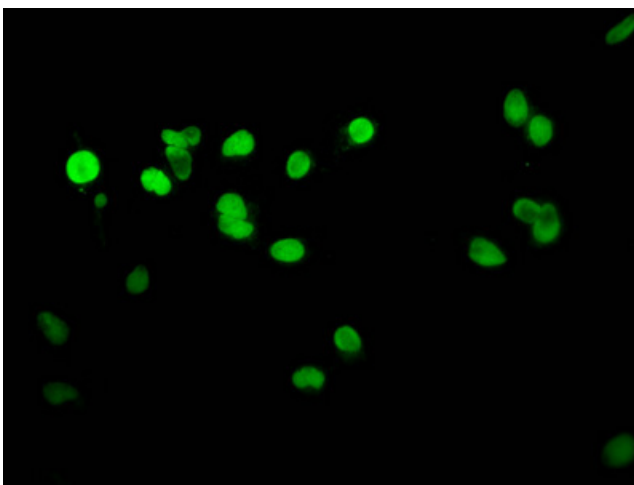


[View online »](#)

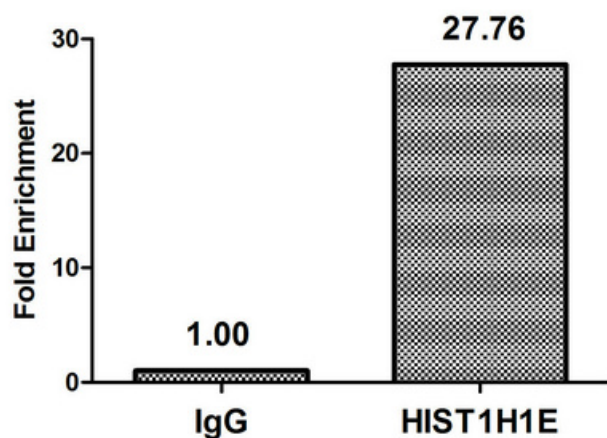
## Product images:



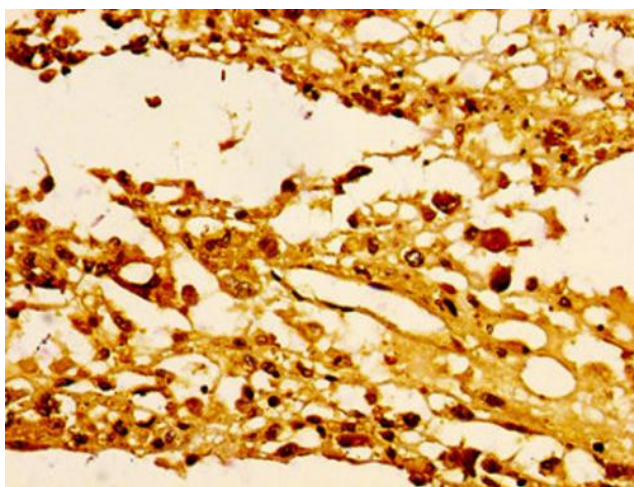
Immunohistochemistry of paraffin-embedded human colon cancer using [TA388010] at dilution of 1:100



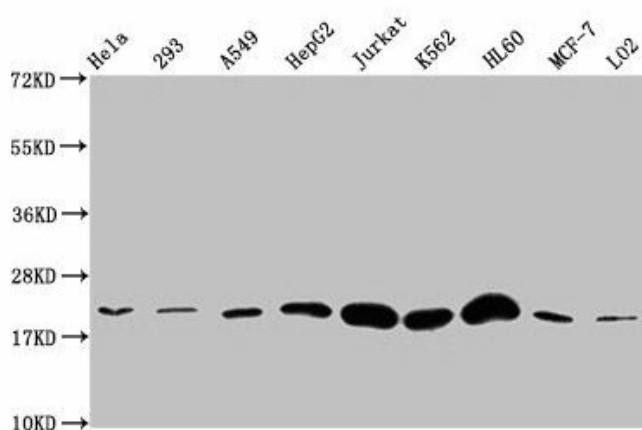
Immunofluorescent analysis of HeLa cells using [TA388010] at dilution of 1:100 and Alexa Fluor 488-conjugated AffiniPure Goat Anti-Rabbit IgG(H+L)



Chromatin Immunoprecipitation Hela ( $4 \times 10^6$ ) were treated with Micrococcal Nuclease, sonicated, and immunoprecipitated with  $8 \mu\text{g}$  anti-HIST1H1E ([TA388010]) or a control normal rabbit IgG. The resulting ChIP DNA was quantified using real-time PCR with primers against the  $\beta$ -Globin promoter.



Immunohistochemistry of paraffin-embedded human melanoma using [TA388010] at dilution of 1:100



#### Western Blot

Positive WB detected in: HeLa whole cell lysate, 293 whole cell lysate, A549 whole cell lysate, HepG2 whole cell lysate, Jurkat whole cell lysate, K562 whole cell lysate, HL60 whole cell lysate, MCF-7 whole cell lysate, LO2 whole cell lysate  
 All lanes: HIST1H1E antibody at 1:500  
 Secondary  
 Goat polyclonal to rabbit IgG at 1/40000 dilution  
 Predicted band size: 22 kDa  
 Observed band size: 22 kDa