

## Product datasheet for **TA387991**

### CDKL5 Rabbit Polyclonal Antibody

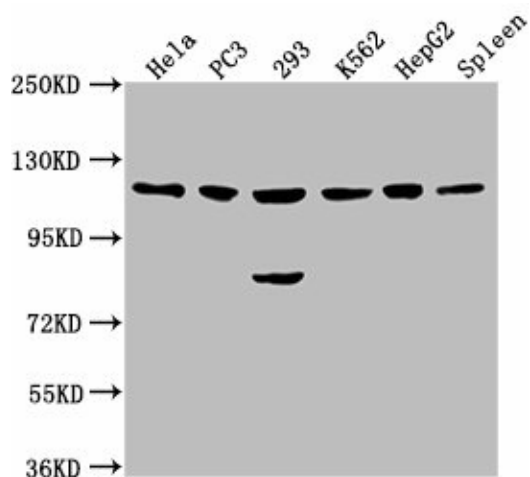
#### Product data:

Product Type:	Primary Antibodies
Applications:	WB
Recommended Dilution:	Recommended dilution: WB:1:1000-1:5000
Reactivity:	Rat, Human
Host:	Rabbit
Isotype:	IgG
Clonality:	Polyclonal
Immunogen:	Recombinant Human Cyclin-dependent kinase-like 5 protein (790-921AA)
Formulation:	Preservative: 0.03% Proclin 300 Constituents: 50% Glycerol, 0.01M PBS, pH 7.4
Concentration:	lot specific
Purification:	>95%, Protein G purified
Conjugation:	Unconjugated
Storage:	Upon receipt, store at -20°C or -80°C. Avoid repeated freeze.
Stability:	1 year from dispatch.
Database Link:	<a href="#">O76039</a>
Background:	Mediates phosphorylation of MECP2.



[View online »](#)

## Product images:



## Western Blot

Positive WB detected in: HeLa whole cell lysate, PC3 whole cell lysate, 293 whole cell lysate, K562 whole cell lysate, HepG2 whole cell lysate, Rat spleen tissue

All lanes: CDKL5 antibody at 1:2000  
Secondary

Goat polyclonal to rabbit IgG at 1/50000 dilution  
Predicted band size: 116, 108 kDa  
Observed band size: 116 kDa