

Product datasheet for **TA387988M**

GJB3 Rabbit Polyclonal Antibody

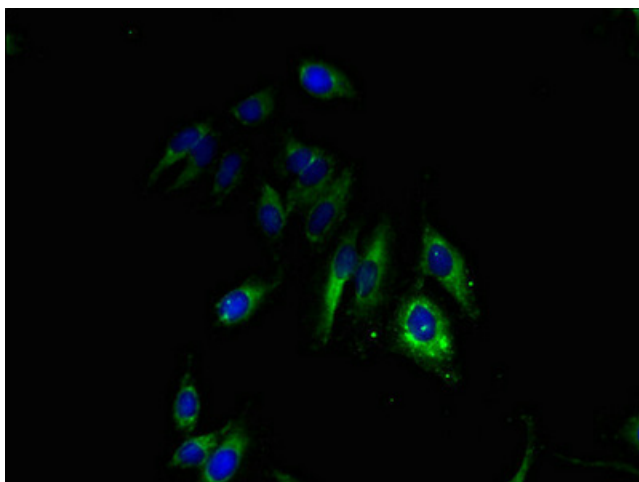
Product data:

Product Type:	Primary Antibodies
Applications:	IF, IHC, WB
Recommended Dilution:	Recommended dilution: WB:1:500-1:5000, IHC:1:20-1:200, IF:1:50-1:200
Reactivity:	Mouse, Human
Host:	Rabbit
Isotype:	IgG
Clonality:	Polyclonal
Immunogen:	Recombinant Human Gap junction beta-3 protein (211-270AA)
Formulation:	Preservative: 0.03% Proclin 300 Constituents: 50% Glycerol, 0.01M PBS, PH 7.4
Concentration:	lot specific
Purification:	>95%, Protein G purified
Conjugation:	Unconjugated
Storage:	Upon receipt, store at -20°C or -80°C. Avoid repeated freeze.
Stability:	1 year from dispatch.
Database Link:	Q75712
Background:	One gap junction consists of a cluster of closely packed pairs of transmembrane channels, the connexons, through which materials of low MW diffuse from one cell to a neighboring cell.

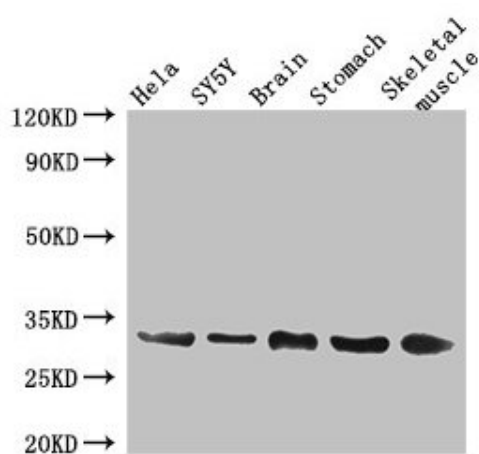


[View online »](#)

Product images:



Immunofluorescent analysis of HeLa cells using [TA387988] at dilution of 1:100 and Alexa Fluor 488-conjugated AffiniPure Goat Anti-Rabbit IgG(H+L)



Western Blot

Positive WB detected in: HeLa whole cell lysate, SH-SY5Y whole cell lysate, Mouse brain tissue, Mouse stomach tissue, Mouse skeletal muscle tissue

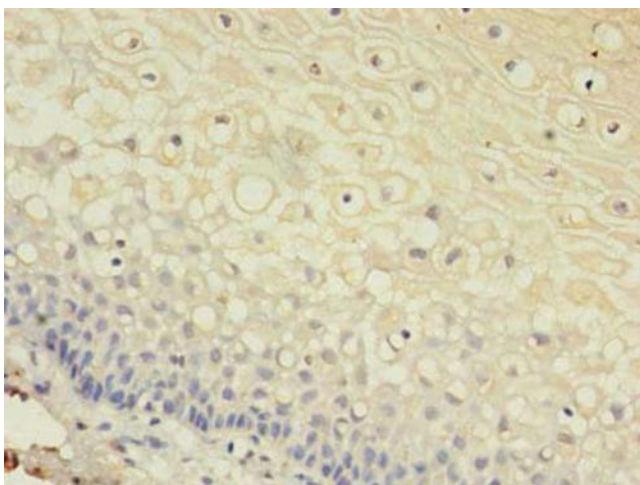
All lanes: GJB3 antibody at 3µg/ml

Secondary

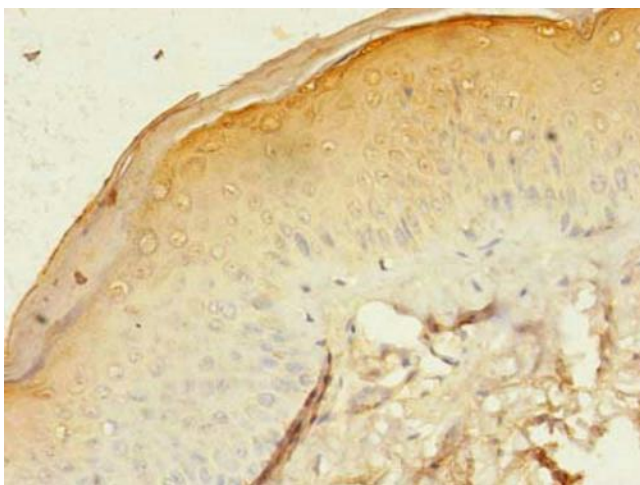
Goat polyclonal to rabbit IgG at 1/50000 dilution

Predicted band size: 31 kDa

Observed band size: 31 kDa



Immunohistochemistry of paraffin-embedded human cervical cancer using [TA387988] at dilution of 1:100



Immunohistochemistry of paraffin-embedded human skin tissue using [TA387988] at dilution of 1:100