

## Product datasheet for **TA387987M**

### CLEC3A Rabbit Polyclonal Antibody

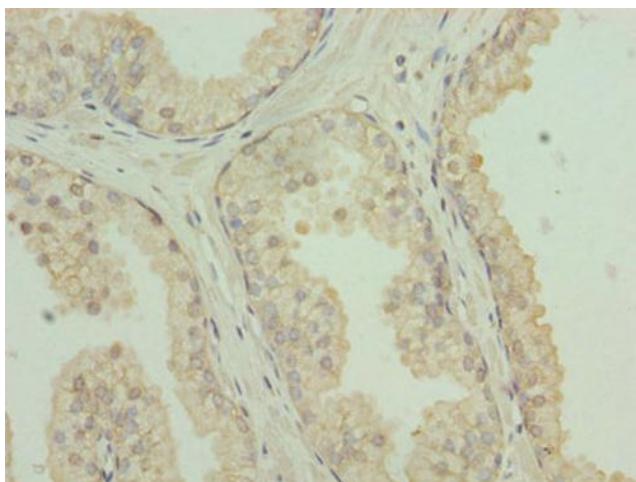
#### Product data:

Product Type:	Primary Antibodies
Applications:	IHC, WB
Recommended Dilution:	Recommended dilution: WB:1:500-1:5000, IHC:1:20-1:200
Reactivity:	Mouse, Human
Host:	Rabbit
Isotype:	IgG
Clonality:	Polyclonal
Immunogen:	Recombinant Human C-type lectin domain family 3 member A protein (23-197AA)
Formulation:	Preservative: 0.03% Proclin 300 Constituents: 50% Glycerol, 0.01M PBS, PH 7.4
Concentration:	lot specific
Purification:	Antigen Affinity Purified
Conjugation:	Unconjugated
Storage:	Upon receipt, store at -20°C or -80°C. Avoid repeated freeze.
Stability:	1 year from dispatch.
Database Link:	<a href="#">Q75596</a>
Background:	Promotes cell adhesion to laminin-332 and fibronectin.

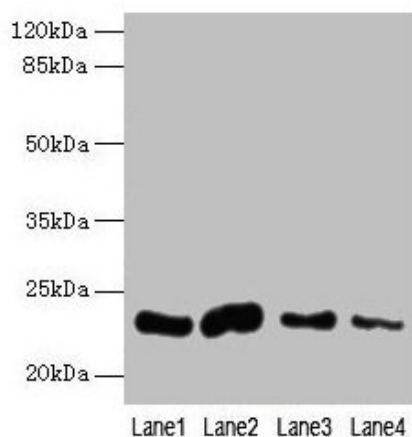


[View online »](#)

## Product images:



Immunohistochemistry of paraffin-embedded human prostate cancer using [TA387987] at dilution of 1:100



Western blot  
All lanes: CLEC3A antibody at 0.4µg/ml  
Lane 1: Mouse liver tissue  
Lane 2: Mouse kidney tissue  
Lane 3: Mouse brain tissue  
Lane 4: Mouse lung tissue  
Secondary  
Goat polyclonal to rabbit IgG at 1/10000 dilution  
Predicted band size: 23 kDa  
Observed band size: 23 kDa