

## Product datasheet for **TA387986M**

### LILRB3 Rabbit Polyclonal Antibody

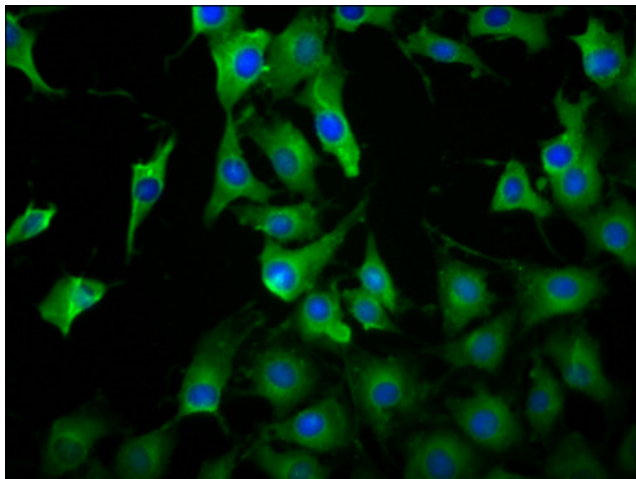
#### Product data:

|                       |   |
|-----------------------|---|
| Product Type:         | Primary Antibodies  |
| Applications:         | IF, WB  |
| Recommended Dilution: | Recommended dilution: WB:1:500-1:5000, IF:1:50-1:200  |
| Reactivity:           | Human   |
| Host:                 | Rabbit  |
| Isotype:              | IgG   |
| Clonality:            | Polyclonal  |
| Immunogen:            | Recombinant Human Leukocyte immunoglobulin-like receptor subfamily B member 3 protein (470-624AA)   |
| Formulation:          | Preservative: 0.03% Proclin 300<br>Constituents: 50% Glycerol, 0.01M PBS, pH 7.4  |
| Concentration:        | lot specific  |
| Purification:         | >95%, Protein G purified  |
| Conjugation:          | Unconjugated  |
| Storage:              | Upon receipt, store at -20°C or -80°C. Avoid repeated freeze.   |
| Stability:            | 1 year from dispatch.   |
| Database Link:        | <a href="#">O75022</a>  |
| Background:           | May act as receptor for class I MHC antigens. Becomes activated upon coligation of LILRB3 and immune receptors, such as FCGR2B and the B-cell receptor. Down-regulates antigen-induced B-cell activation by recruiting phosphatases to its immunoreceptor tyrosine-based inhibitor motifs (ITIM). |



[View online »](#)

## Product images:



Immunofluorescence staining of NIH/3T3 cells with [TA387986] at 1:100, counter-stained with DAPI. The cells were fixed in 4% formaldehyde, permeabilized using 0.2% Triton X-100 and blocked in 10% normal Goat Serum. The cells were then incubated with the antibody overnight at 4°C. The secondary antibody was Alexa Fluor 488-conjugated AffiniPure Goat Anti-Rabbit IgG(H+L).



### Western Blot

Positive WB detected in: HepG2 whole cell lysate

All lanes: LILRB3 antibody at 3.9µg/ml

Secondary

Goat polyclonal to rabbit IgG at 1/50000 dilution

Predicted band size: 70, 72 kDa

Observed band size: 70 kDa