

## Product datasheet for **TA387975**

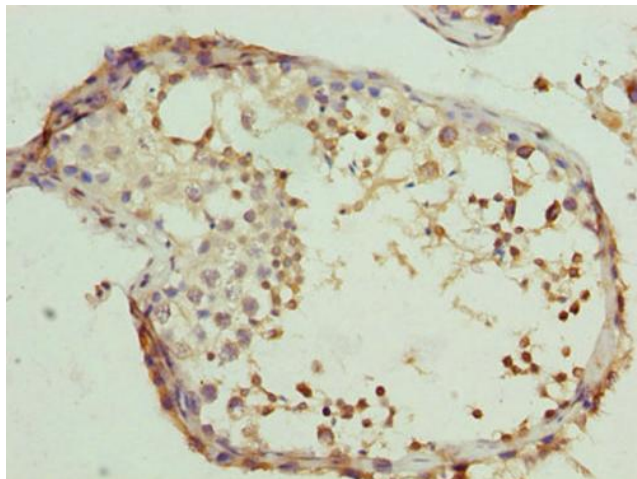
### CLGN Rabbit Polyclonal Antibody

#### Product data:

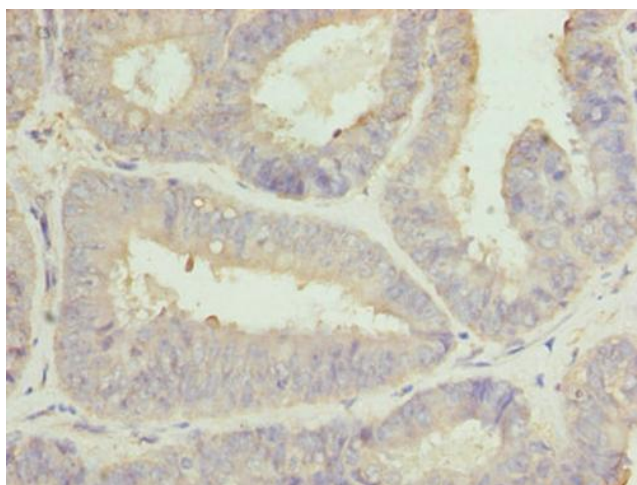
Product Type:	Primary Antibodies
Applications:	IHC, WB
Recommended Dilution:	Recommended dilution: WB:1:500-1:5000, IHC:1:20-1:200
Reactivity:	Mouse, Human
Host:	Rabbit
Isotype:	IgG
Clonality:	Polyclonal
Immunogen:	Recombinant Human Calmegin protein (200-400AA)
Formulation:	Preservative: 0.03% Proclin 300 Constituents: 50% Glycerol, 0.01M PBS, PH 7.4
Concentration:	lot specific
Purification:	>95%, Protein G purified
Conjugation:	Unconjugated
Storage:	Upon receipt, store at -20°C or -80°C. Avoid repeated freeze.
Stability:	1 year from dispatch.
Database Link:	<a href="#">O14967</a>
Background:	Functions during spermatogenesis as a chaperone for a range of client proteins that are important for sperm adhesion onto the egg zona pellucida and for subsequent penetration of the zona pellucida. Required for normal sperm migration from the uterus into the oviduct. Required for normal male fertility. Binds calcium ions.



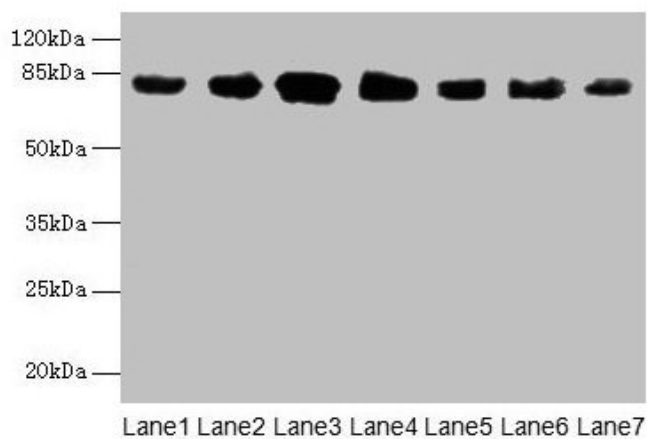
[View online »](#)

**Product images:**

Immunohistochemistry of paraffin-embedded human testis tissue using TA387975 at dilution of 1:100



Immunohistochemistry of paraffin-embedded human endometrial cancer using TA387975 at dilution of 1:100



#### Western blot

All lanes: CLGN antibody at 7 $\mu$ g/ml

Lane 1: Mouse brain tissue

Lane 2: Mouse lung tissue

Lane 3: Jurkat whole cell lysate

Lane 4: HepG2 whole cell lysate

Lane 5: PC-3 whole cell lysate

Lane 6: Hela whole cell lysate

Lane 7: HL60 whole cell lysate

Secondary

Goat polyclonal to rabbit IgG at 1/10000 dilution

Predicted band size: 71, 47 kDa

Observed band size: 80 kDa